



SAFER CORNWALL

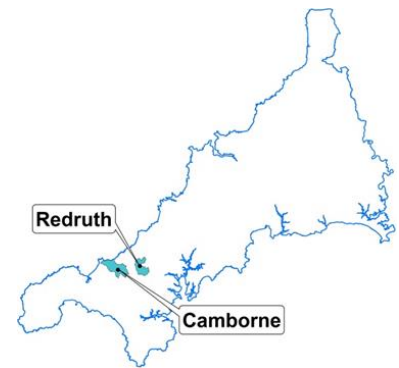
Kernow Salwa

Safer Camborne & Redruth Town Profile 2023



Introduction








This profile provides a **picture of crime and community safety issues** for this area. It compares Camborne and Redruth town areas with the average for other large towns in Cornwall (towns with a population of 10,000 or more), described within this profile as “urban”.



Safer Camborne and Redruth was established in 2016 to facilitate and support a **co-ordinated multi-agency approach to community safety** issues to improve feelings of safety and public reassurance, reduce the risk of harm to residents and protect vulnerable groups. The multi-agency group involves local community and voluntary sector agencies in the work of the partnership and encourages social inclusion and participation through inviting all partners to actively be involved in the problem-solving process and sharing a sense of pride in their towns.

In November 2022 Devon and Cornwall Police began transitioning to a new record management system (Niche), which will provide enhanced functionality and analytical capability. During the transition period, officers are able to view crime and intelligence records, but a range of process and data issues means that providing strategic information is not currently possible. Therefore, the latest reference data included in this profile relates to the 12 month period ending 31 October 2022.

Key statistics

 People	Current population of the Camborne and Redruth network area is 64,920	19% are aged under 15 17% Cornwall / 18% England 22% are aged over 65 25% Cornwall / 18% England
 Vulnerable groups	27% live in the 20% most deprived neighbourhoods in England 24% of children are living in poverty (18% in Cornwall and 19% across England)	 Education & skills 19% of people have no qualifications 22% in Cornwall 18% across England
 Housing	3% of households lack central heating 4% in Cornwall 2% across England	 Economy 31% of people aged 16-74 are in full-time employment 27% in Cornwall 34% across England
 Health & wellbeing	22% of people have a limiting long-term illness 21% in Cornwall 17% across England	 Access & transport 19% of households do not have a car 15% in Cornwall 24% across England

Except where stated this profile provides information for **the geographical area representing Camborne and Redruth Network area as defined by Local Insight (communityinsight.org)** (this also includes Pool and Illogan); comparisons are drawn with the average for other large towns in Cornwall (with a population of 10k or more, also described as “urban”) and Cornwall as a whole.

Cost of living crisis and impact on crime and community safety

The pandemic left many households and businesses in Cornwall facing **financial difficulties**, as they struggled to manage increases in the costs of housing, energy, fuel and food. 3 key factors – energy prices, rising inflation and tax increases – are now contributing to a **cost of living crisis**, with Russia's invasion of Ukraine adding further uncertainty to global oil and gas prices and supplies.

We know from previous recessions, that **financial precarity drives a range of harms** related to crime and community safety and the impacts can be long lasting. How we manage these risks and support the most vulnerable in our communities will feature in the refresh of our Partnership Plan for 2023/24.

Violence (stranger violence is unlikely to be impacted). Wider **safeguarding concerns** around financial abuse and manipulation, diet and wellbeing issues. People fall through the gaps in services that are overstretched and cutting back – increasing **demand for crisis support** in increasingly complex cases.

Anti-social behaviour may rise, with the increase in **rough sleeping** playing a small but visible part; **visible social disorder** drives wider feelings of unrest and **community tensions**; During a recession, people struggle with jobs and finances – scams and **frauds**, shoplifting, personal **thefts** and robberies increase, **black markets** and stealing to order escalates, and these markets are exploited by **organised crime**.

Drug and alcohol use increases to cope with increased psychological distress, bringing with it all the associated **harms to health and family life and the costs to society**, and leaving communities vulnerable to exploitation by organised crime and violence.

Based on previous recessions, interpersonal violence is likely to increase, specifically **domestic and acquaintance** potential increase in radicalisation, right-wing anti-immigrant narratives and **hate crimes**; increase in environment crime and nuisance occurrences.

An **insecure home** is the most significant barrier to any successful or lasting engagement with services that could provide help and support and a **key factor in perpetuating reoffending**.

Increase in **youth unemployment** rates has a long term impact. Young people who leave school during recessions are significantly more likely to become involved in crime than those who leave school while labour markets are more buoyant. The sense of a lack of future and loss of opportunities drive **risk taking behaviour**, including drug use and involvement in crime.

Cornwall overview

Overall **recorded crime has increased by 11%** with most types of crime having risen over the last 12 months. This was expected further to the lifting of COVID restrictions and local trends are generally in line with the national picture.

Cornwall's crime rate remains comparatively low, and we are ranked 3/15 in our national comparison group (Most Similar Group, MSG). The rate of crime is 53.6 per 1000 population which is 22% lower than the MSG average.

Rates of theft continue to be significantly lower than in other similar places in the UK, despite the increases over the last year as crime levels have re-established.

There were **8,930 incidents of anti-social behaviour (ASB)** reported to the police in the 12 months to 31st October 2022, equating to a rate of 15.6 incidents per 1000 population. The volume of reported ASB incidents is **27% lower than the same period last year** and has returned to around the same level as it was pre-COVID.

Reports of ASB to the police have **reduced across Cornwall over the last year** with substantial falls in rowdy nuisance neighbour incidents (down by 45%) and rowdy inconsiderate behaviour (down by 21%).

ASB continues to be a persistent headline issue in some of our larger towns. This requires ongoing multi-agency efforts to manage – ensuring that the people involved, who often have multiple vulnerabilities, receive **the right support, alongside appropriate enforcement action** to provide respite to local businesses and other residents.

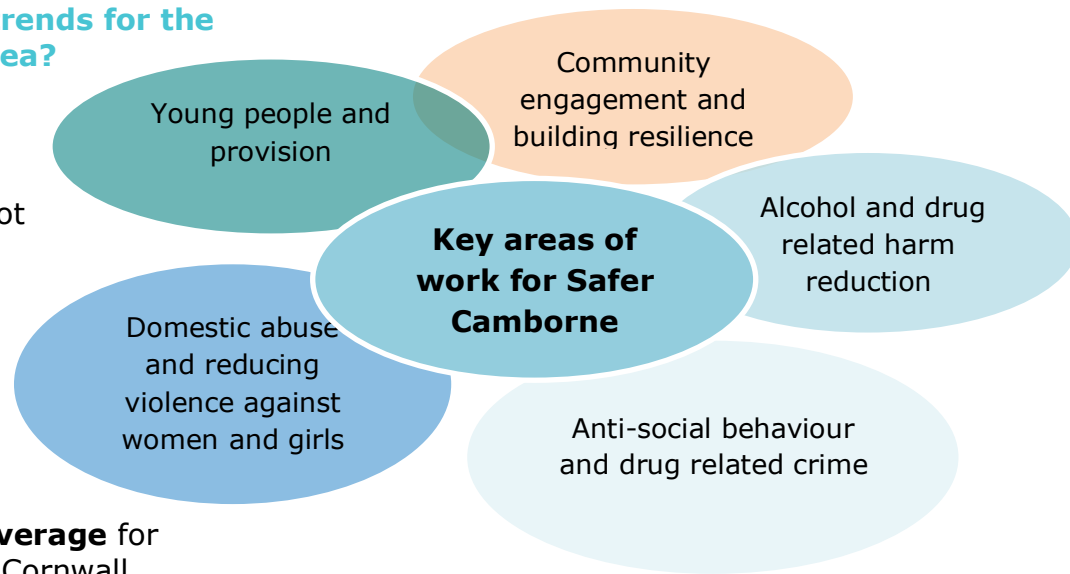
There were **700 hate crimes in Cornwall** in the 12 months up to October 2022 which is a **20% increase** on the previous 12 months. Of these crimes **racially motivated hate crime¹** was the most commonly reported in Cornwall.

¹ It is important to note that hate crime can often target more than one characteristic, for example race and sexuality, within one reported crime.

Camborne

What are the key trends for the Camborne town area?

Along with other large towns in Cornwall, Camborne town area is a hotspot for crime, due to the concentration of people and activity there. It has a population of just over 21,200. The **total crime rate in Camborne is 17% greater than the average** for other large towns in Cornwall.



-
- The volume of crime has increased by 8% over the last 12 months, which is lower than the increase seen across Cornwall and in the other Safer Towns.
- Violent crime rates are higher than average in Camborne across all types of violence. **Violence with injury offences increased by 10%** whilst violence without injury has risen by 29%.
- **Public order offences have increased** by 18% compared with the previous year. Some of this can be accounted for by incidents that would of previously been categorised as anti-social behaviour.
- **Anti-social behaviour reduced by 13%** across the town which is a smaller reduction than that seen across Cornwall.
- There was an increase in hate crime incidents with the number of offences doubling over the year. This is made up of **mainly racist and homophobic crimes**. Although the volume of incidents is small, making up 2% of the total number of crimes, the impact on victims and their families can be severe and long lasting.
- There was an increase in alcohol related crimes as well as those where the victim is aged under 18.
- Shoplifting offences increased in the town and across the rest of Cornwall, although the **rate of increase in Camborne is much higher**.

Crime overview

The table below provides a quick glance at all crime and disorder types in the **Camborne** town focus area, describing whether the trend is increasing (▲), decreasing (▼) or stable (▶) and how this area compares with the urban area average for Cornwall (high ●, above average ●, average or lower ●).

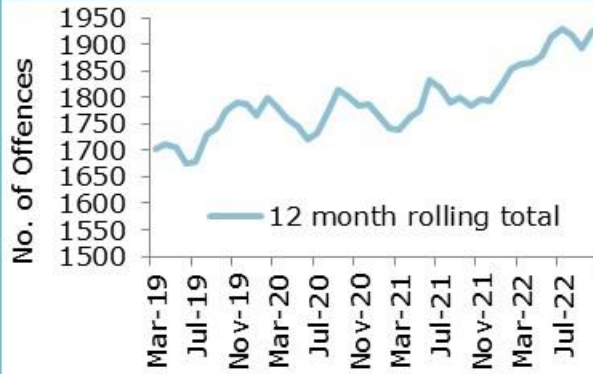
Crime / Incident type	Trend	Rate per 1000	Year ending Oct 22	Year ending Oct 21	Annual Change	Urban areas	Urban areas trend
All crime	▲	90.5	1,923	1,777	8%	●	▲
Domestic Abuse (total incidents)	▼	30.2	641	695	-8%	●	▲
Domestic Abuse Crimes	▼	19.3	410	443	-7%	●	▲
Rape	▶	1.7	36	32	13%	●	▶
Other Sexual Offences	▲	3.0	63	52	21%	●	▶
Stalking and Harrassment	▶	10.8	230	236	-3%	●	▲
Alcohol Related Crime	▲	24.5	520	434	20%	●	▲
Public Order Offences	▲	7.3	155	131	18%	●	▲
Anti-social behaviour incidents	▼	25.7	547	629	-13%	●	▲
Street Drinking/Begging/Drug Litter	▶	2.4	51	48	6%	●	▶
Hate Crime	▲	2.7	57	29	97%	●	▶
Homicide	▶	0.0	0	0	0%	●	▶
Violence with Injury	▲	15.7	334	305	10%	●	▲
Violence without Injury	▲	19.5	414	320	29%	●	▲
Under 18 Victims of Crime	▲	55.9	256	209	22%	●	▲
Drug Offences	▶	4.3	91	92	-1%	●	▶
Possession of Weapons	▶	0.9	19	19	0%	●	▶
Dwelling burglary [1]	▶	3.8	33	31	6%	●	▶
Non-dwelling burglary	▶	1.0	21	18	17%	●	▶
Robbery	▶	0.5	10	13	-23%	●	▶
Vehicle Offences	▼	1.7	36	45	-20%	●	▶
Shoplifting	▲	3.2	67	41	63%	●	▶
Other Theft	▼	4.8	102	114	-11%	●	▲
Criminal Damage	▼	12.2	260	286	-9%	●	▲
Arson	▲	0.6	12	0		●	▶
Other Offences	▶	1.9	40	37	8%	●	▶

[1] based on rate per 1000 households

Note that caution should be taken when interpreting percentage change relating to small numbers (where there are less than 20 crimes per annum).

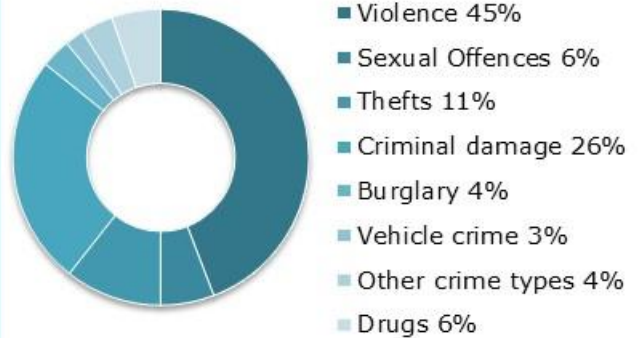
Trends and seasonality - Camborne

Trend



Camborne has seen an increasing trend in the volume of crime volume up until the end of October 2022.

Offences

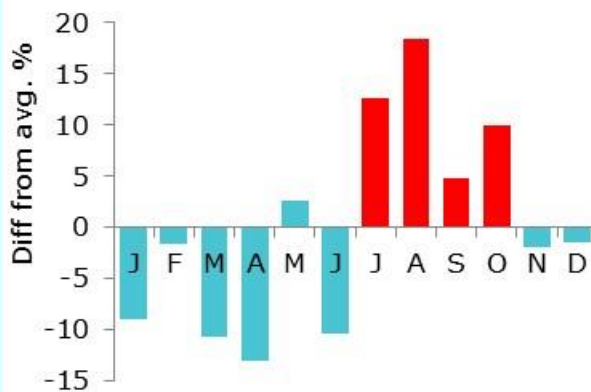


There was a higher proportion of violent crimes in Camborne (45%) compared with the rest of Cornwall (31%).

There were also higher levels of criminal damage and drug offences.

Seasonality

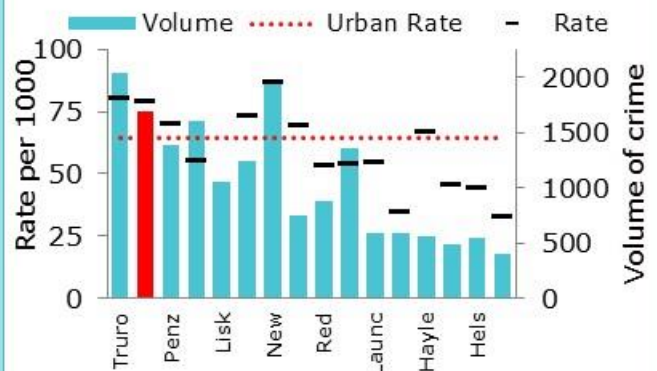
(based on a 3 year average)



The volume of crime has been higher between July to October in Camborne.

Comparison

(based on combined rate and volume)



The rate and volume of crime in Camborne is higher than in some of the other Safer Towns in Cornwall and the urban average.

Violence with injury

Cornwall context

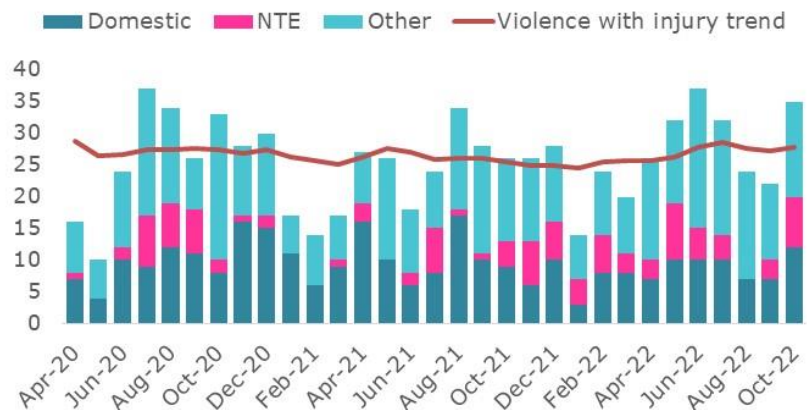
The level of violence with injury was around the same level as pre-pandemic - this was predicted and was in line with national trends. Nationally, the trend is now starting to level off and in Cornwall violence with injury has remained fairly stable for the year ending October 2022. Around a third of recorded violence with injury relates to domestic abuse.

Violent crimes increased by 20% in Camborne in the year ending October 2022. 45% of all crimes committed in Camborne involved violence. This increase can mainly be attributed to a rise in **violence with injury** linked to the **night-time economy** and **other violent offences**.

- Camborne has higher rates of violence with injury than the rest of Cornwall and other urban areas.

Violence with Injury in Camborne	Trend	Rate per 1000	Year ending Oct 22	Year ending Oct 21	Annual Change	Urban areas	Urban areas trend
Total Violence with Injury	▲	15.7	334	305	10%	●	▶
Alcohol related	▶	6.6	140	139	1%	●	▲
Victim aged under 18	▶	2.4	50	48	4%	●	▲
Domestic Abuse	▼	4.6	98	133	-26%	●	▼
Night time economy	▲	2.7	58	22	164%	●	▲
Other	▲	7.7	164	134	22%	●	▶
Not known	▶	0.7	14	16	-13%	●	▼

A third (33%) of violent crime in Camborne was recorded as domestic abuse. The volume of these offences had reduced over the last 12 months.



Domestic abuse and sexual violence

Cornwall context

Reported levels of domestic abuse and sexual violence have increased significantly over the longer term. In the year ending 2022 there was a small increase in the number of incidents and crimes recorded in Cornwall.

Domestic abuse makes up a high proportion of crimes recorded by Police in Devon and Cornwall at 22% of the overall figure for 21/22.

In the 12 months to October 2022 the total number of **domestic abuse incidents reduced** by 8% and crimes reduced by 7% in Camborne. This is in contrast to the rest of Cornwall and other urban areas which saw little change.

- Despite this reduction the rates of domestic abuse in Camborne are still higher than across the rest of Cornwall and in other urban areas.

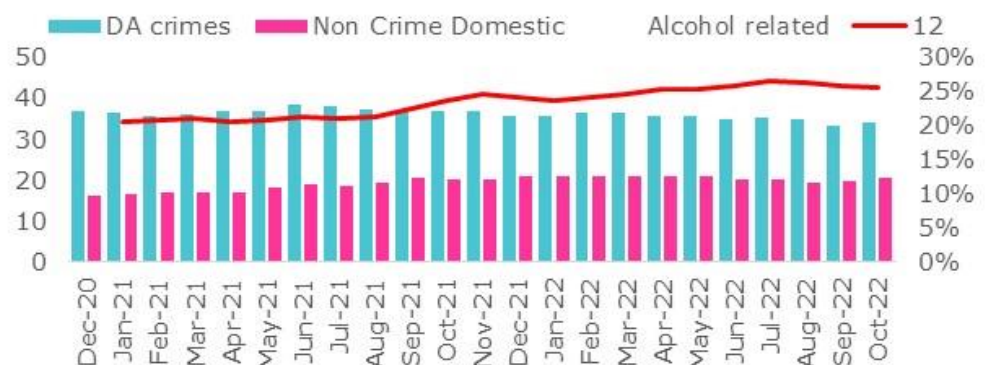
Crime / Incident type	Trend	Rate per 1000	Year ending Oct 22	Year ending Oct 21	Annual Change	Urban areas	Trend	Cornwall Comparison	Trend
Domestic Abuse (total incidents)	▼	30.2	641	695	-8%	●	▲	●	▶
Domestic Abuse Crimes	▼	19.3	410	443	-7%	●	▲	●	▶
Rape	▶	1.7	36	32	13%	●	▶	●	▲
Other Sexual Offences	▲	3.0	63	52	21%	●	▶	●	▲

There were 36 rapes reported to the Police in the 12 months to October 2022 in Camborne which is four more than the previous year.

Other sexual offences have also increased over this time period (11 more crimes) which is in line with the rest of Cornwall and other urban areas.

Stalking and harassment in Camborne stayed the same over this year which is consistent with the overall picture in Cornwall.

There were 239 people receiving support from services for domestic abuse and sexual violence living in Camborne during 2022.



The number of domestic abuse incidents involving alcohol did, however, increase over these 12 months in Camborne.

Anti-social behaviour

Cornwall context

Reports of anti-social behaviour (ASB) to the police reduced across Cornwall in the year up to October 2022 with substantial falls in rowdy nuisance neighbour incidents (down by 45%) and rowdy inconsiderate behaviour (down by 21%). The volume of reported incidents at this point was 27% lower than the same period the previous year which had returned to its pre-COVID levels.

Anti-social behaviour reduced by 13% in Camborne to 547 incidents in the year ending October 2022. This reduction is not as great as what was experienced across the rest of Cornwall and in other urban areas.

- The greatest reduction in ASB in Camborne was in rowdy nuisance neighbour incidents which fell by 44% (77 incidents) during the 12 months to October 2022.

Crime / Incident type	Trend	Rate per 1000	Year ending Oct 22	Year ending Oct 21	Annual Change	Urban areas	Trend	Cornwall Comparison	Trend
Total ASB incidents	▼	25.7	547	629	-13%	●	▲	●	▼
Rowdy/Inconsiderate Behaviour	▶	17.0	361	363	-1%	●	▲	●	▼
Rowdy Nuisance Neighbours	▼	4.6	98	175	-44%	●	▶	●	▼
Street Drinking / Begging / Drug Litter	▶	2.4	51	48	6%	●	▶	●	▼
Vehicle	▼	0.7	14	22	-36%	●	▶	●	▼
Other	▶	1.1	23	20	15%	●	▶	●	▼

Anti-social behaviour has shown a reducing trend in Camborne over the year ending October 2022. This can mainly be attributed to a reduction in the number of rowdy nuisance neighbour incidents.



Problem use of drugs and alcohol

Cornwall context

Drug related deaths are at an all-time peak and this has impacted on crime and health related harms. Socio economic factors such as high youth unemployment combined with cuts to social and other services under austerity have been cited nationally as contributing to this trend. There has been a rise in the numbers of people receiving treatment for drugs and alcohol in Cornwall.

Within Cornwall there was a **21% increase in alcohol related crime** during the 12 months up to October 2022 while the number of drug offences remained stable.

Alcohol related crime increased by 19% (83 crimes) in Camborne in the year ending October 2022 which is similar to the increase seen across the rest of Cornwall and other urban areas.

- The rate of alcohol related crime in Camborne is much higher than the Cornwall and urban average.
- There were 91 drug offences over this 12 month period in Camborne which is similar to the previous year.

Some crime types can be linked to problem drug and alcohol use. There were 33 dwelling burglaries in Camborne in the 12 months up until October 2022 which is similar to the previous year. **Shoplifting increased by 63%** (up 26 crimes) over this time period.

- There were 63 people living in Camborne receiving treatment for alcohol use and 146 receiving treatment for problem drug use.
- There were six drug litter clean up requests made to the Police in 2022 and six the previous year.

Young people and crime

Cornwall context

In Cornwall there has been an **escalation of concerns about young people** being involved in **anti-social behaviour and more serious issues**, including **violence, knife carrying and sexual offences**. As normal life has re-established after the pandemic, we have seen increases in public space violence linked to the night-time economy, alcohol related violence and violence amongst young people.

Services in Cornwall are reporting that, post pandemic, many young people are presenting with higher levels of complexity and show signs of a lower developmental age with less cognitive awareness. This is believed to be contributing to a worrying **increase in risk-taking behaviour** with an apparent lack of awareness of the consequences of harm (to themselves and others).

In the 12 months leading up to October 2022 the number of under 18s as a victim of crime in Cornwall rose by 24%.

The number of **under 18s as victims of crime increased by 22%** (47 crimes) in Camborne when compare with the previous year. This increase is similar to what was experienced across the rest of Cornwall and in other urban areas.

- The rate of **young people as victims of crime is much higher in Camborne** than the rest of Cornwall and in in other Safer Towns.

There were 15 young people charged with 32 offences in Camborne during the year ending October 2022.

Affected others

We know from analysis by the Office for Health Improvement and Disparities (OHID) that our young people in treatment are more likely to experience and witness domestic abuse in the home so it would be safe to suggest that those young people affected (known as affected others) by parental substance misuse would experience the same. This suggests that the environment is having a negative impact on these young people.

In Camborne there were 39 young people aged under 18 who are currently living with a parent who is engaged with substance use treatment services.

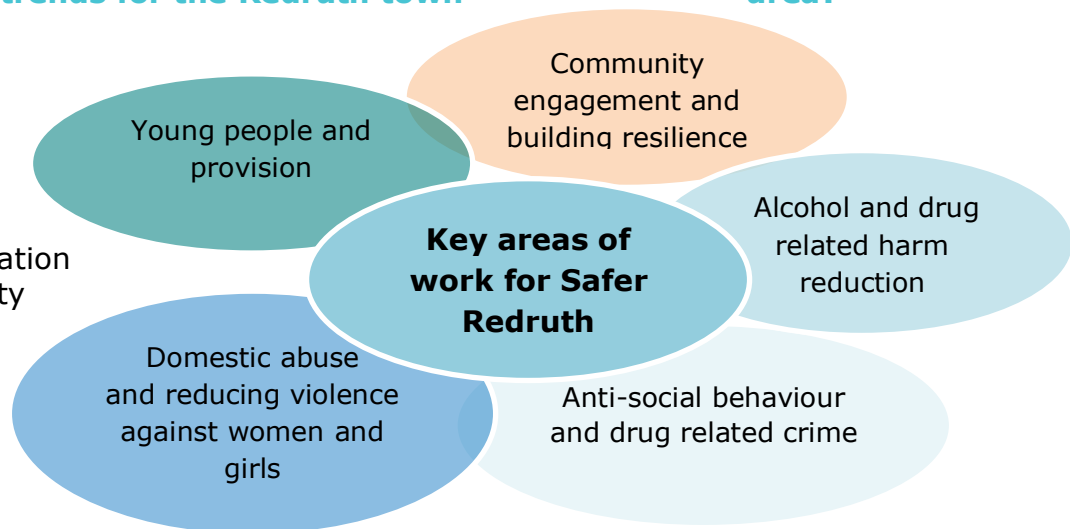
Redruth

What are the key trends for the Redruth town area?

Along with other large towns in Cornwall, Redruth town area is a hotspot for crime, due to the concentration of people and activity there. It has a population of just over 16,300.

The overall crime trend in Redruth

remained relatively stable in the year to October 2022 when compared with the previous year. This contrasts with the increasing trend seen across Cornwall.



- Shoplifting increased in the town at a greater rate than across the rest of Cornwall and the other Safer Towns.
- Vehicle offences increased which was **mainly due to theft from vehicle offences**, however there was a small increase in the number of theft of vehicle offences.
- Crimes where **victims were aged under 18 also increased** in Redruth by a third which is in line with the increases we are seeing across Cornwall and the other Safer Towns.

Crime overview

The table below provides a quick glance at all crime and disorder types in the **Redruth** town focus area, describing whether the trend is increasing (▲), decreasing (▼) or stable (▶) and how this area compares with the urban area average for Cornwall (high ●, above average ●, average or lower ●).

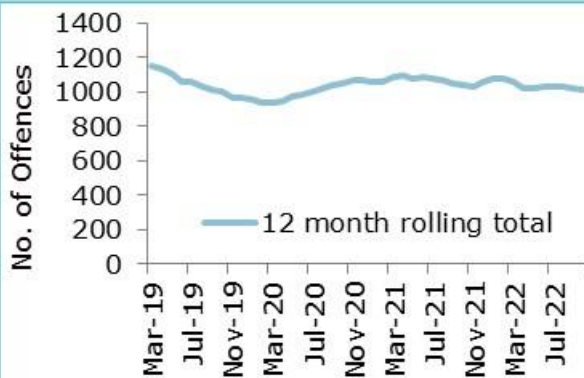
Crime / Incident type	Trend	Rate per 1000	Year ending Oct 22	Year ending Oct 21	Annual Change	Urban areas	Urban areas trend	Cornwall Comprison	Cornwall trend
All crime	▶	62.6	1,024	1,038	-1%	●	▲	●	▲
Domestic Abuse (total incidents)	▲	21.9	358	340	5%	●	▲	●	▶
Domestic Abuse Crimes	▲	14.4	235	216	9%	●	▲	●	▶
Rape	▶	1.0	16	17	-6%	●	▶	●	▲
Other Sexual Offences	▲	2.3	38	31	23%	●	▶	●	▲
Stalking and Harrassment	▼	8.6	140	152	-8%	●	▲	●	▶
Alcohol Related Crime	▶	11.9	194	204	-5%	●	▲	●	▲
Public Order Offences	▶	4.5	73	77	-5%	●	▲	●	▲
Anti-social behaviour incidents	▼	19.9	325	365	-11%	●	▲	●	▼
Street Drinking/Begging/Drug Litter	▲	1.9	31	18	72%	●	▶	●	▼
Hate Crime	▼	1.4	23	33	-30%	●	▶	●	▲
Homicide	▶	0.0	0	0	0%	●	▶	●	▶
Violence with Injury	▼	9.5	155	165	-6%	●	▲	●	▶
Violence without Injury	▲	10.9	179	161	11%	●	▲	●	▲
Under 18 Victims of Crime	▲	43.3	148	111	33%	●	▲	●	▲
Drug Offences	▼	2.2	36	47	-23%	●	▶	●	▶
Possession of Weapons	▶	0.5	8	4	100%	●	▶	●	▲
Dwelling burglary [1]	▶	2.1	16	16	0%	●	▶	●	▼
Non-dwelling burglary	▶	0.9	15	16	-6%	●	▶	●	▲
Robbery	▶	0.6	9	5	80%	●	▶	●	▲
Vehicle Offences	▲	3.1	51	34	50%	●	▶	●	▲
Shoplifting	▲	3.5	57	32	78%	●	▶	●	▲
Other Theft	▼	4.5	73	88	-17%	●	▲	●	▲
Criminal Damage	▼	8.1	132	173	-24%	●	▲	●	▲
Arson	▶	0.2	4	4	0%	●	▶	●	▲
Other Offences	▲	1.3	22	16	38%	●	▶	●	▲

[1] based on rate per 1000 households

Note that caution should be taken when interpreting percentage change relating to small numbers (where there are less than 20 crimes per annum).

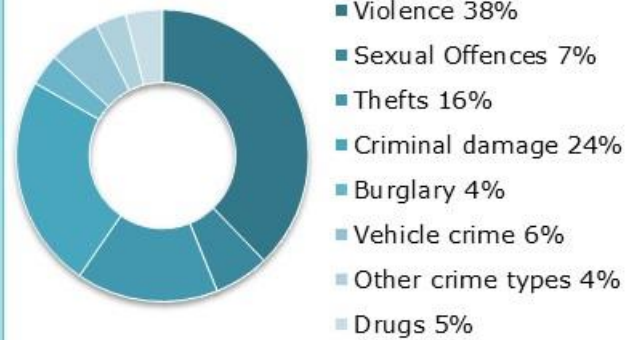
Trends and seasonality - Redruth

Trend



The overall volume of crime remained stable in the 12 months to October 2022.

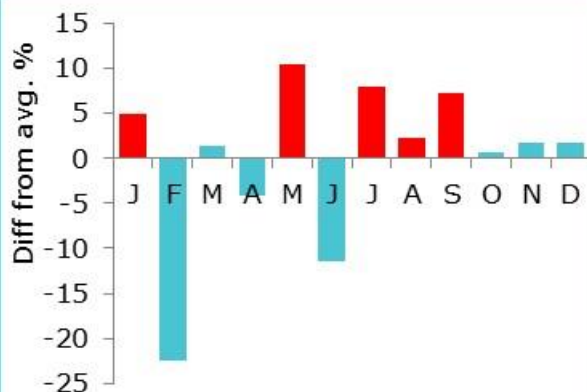
Offences



Redruth has a higher proportion of violent offences than the Cornwall average. There are also slightly higher levels of sexual offenses, criminal damage and drugs.

Seasonality

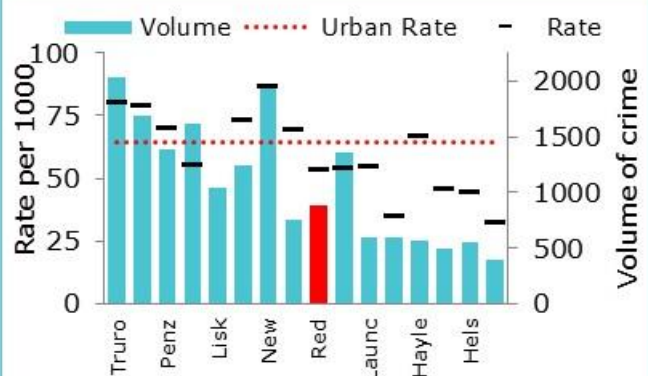
(based on a 3 year average)



There is no distinct seasonal crime pattern in Redruth.

Comparison

(based on combined rate and volume)



The rate and volume of crime in Redruth is not as high as some of the other Safer Towns in Cornwall.

Violence with injury

Cornwall context

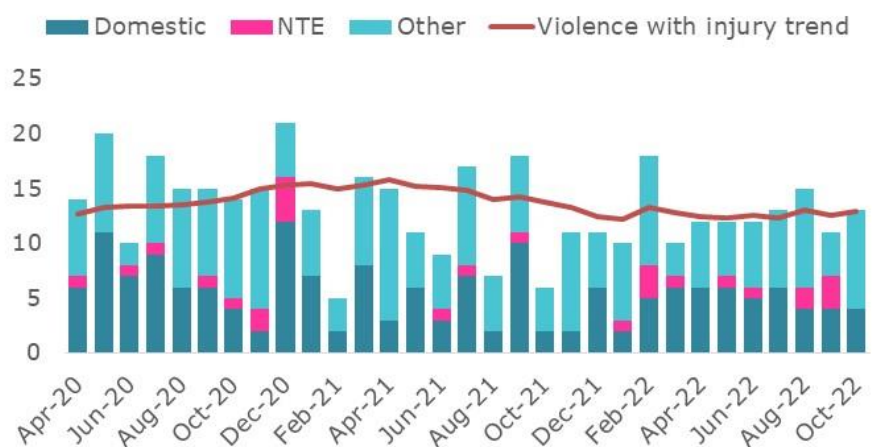
The level of violence with injury was around the same level as pre-pandemic - this was predicted and was in line with national trends. Nationally, the trend is now starting to level off and in Cornwall violence with injury has remained fairly stable for the year ending October 2022. Around a third of recorded violence with injury relates to domestic abuse.

Violence with injury **reduced by 6% in Redruth** in the 12 months to October 2022. This is in contrast to the rest of Cornwall and other urban areas which experienced a slight increase.

- There was a **small decrease in the numbers of domestic abuse** offences involving violence with injury (-8 crimes).
- There was an increase (up 12 crimes) in the numbers of young people as victims of violence with injury over these 12 months.

Violence with Injury in Redruth	Trend	Rate per 1000	Year ending Oct 22	Year ending Oct 21	Annual Change	Urban areas	Urban areas trend
Total Violence with Injury	▼	9.5	155	165	-6%	●	▶
Alcohol related	▼	3.7	61	70	-13%	●	▲
Victim aged under 18	▲	2.3	38	26	46%	●	▲
Domestic Abuse	▼	3.4	56	64	-13%	●	▼
Night time economy	▶	0.7	12	9	33%	●	▲
Other	▶	4.9	80	80	0%	●	▶
Not known	▼	0.4	7	12	-42%	●	▼

Violence with injury has reduced in trend from 2021 in Redruth.



Domestic abuse and sexual violence

Cornwall context

Reported levels of domestic abuse and sexual violence have increased significantly over the longer term. In the year ending 2022 there was a small increase in the number of incidents and crimes recorded in Cornwall.

Domestic abuse makes up a high proportion of crimes recorded by Police in Devon and Cornwall at 22% of the overall figure for 21/22.

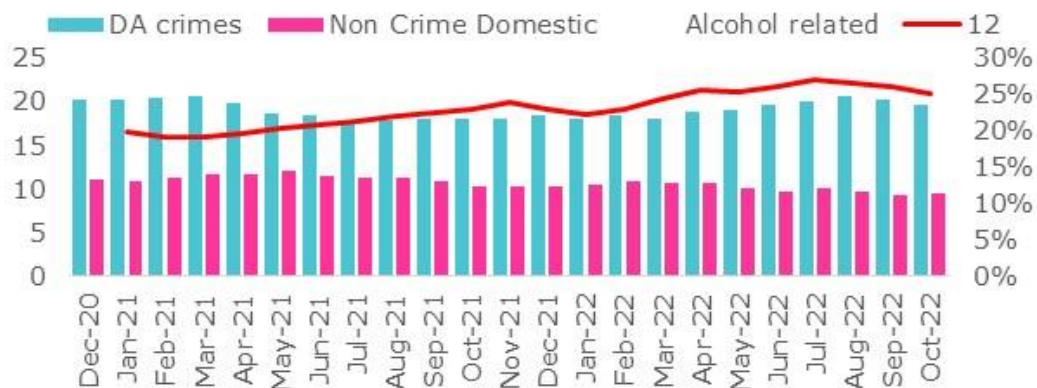
Domestic abuse crimes increased by 9% (19 crimes) in Redruth. This increase was higher in Redruth than across the rest of Cornwall and other urban areas.

There were 18 more domestic abuse incidents reported in Redruth during this period which again is an increase higher than what was experienced across the rest of Cornwall.

Crime / Incident type	Trend	Rate per 1000	Year ending Oct 22	Year ending Oct 21	Annual Change	Urban areas	Trend	Cornwall Comparison	Trend
Domestic Abuse (total incidents)	▲	21.9	358	340	5%	●	▲	●	▶
Domestic Abuse Crimes	▲	14.4	235	216	9%	●	▲	●	▶
Rape	▶	1.0	16	17	-6%	●	▶	●	▲
Other Sexual Offences	▲	2.3	38	31	23%	●	▶	●	▲

The number of rapes reported in Redruth during this time was consistent with the previous year. Other sexual offences increased by 7 crimes during this year and **stalking and harassment reduced** by 8% (12 crimes) which is lower than the Cornwall and urban area average.

Domestic abuse linked to alcohol rose by 9% during the year to October 2022 in Redruth.



Anti-social behaviour

Cornwall context

Reports of anti-social behaviour (ASB) to the police reduced across Cornwall in the year up to October 2022 with substantial falls in rowdy nuisance neighbour incidents (down by 45%) and rowdy inconsiderate behaviour (down by 21%). The volume of reported incidents at this point was 27% lower than the same period the previous year which had returned to its pre-COVID levels.

Anti-social behaviour incidents reduced by 11% in Redruth in the year ending October 2022. This decrease is not as pronounced as across the rest of Cornwall and in other urban areas.

The biggest reduction has been in rowdy/ inconsiderate behaviour in Redruth while there has been an increase in street drinking/begging/ drug litter.

Crime / Incident type	Trend	Rate per 1000	Year ending Oct 22	Year ending Oct 21	Annual Change	Urban areas	Trend	Cornwall Comparison	Trend
Total ASB incidents	▼	19.9	325	365	-11%	●	▲	●	▼
Rowdy/Inconsiderate Behaviour	▼	12.4	203	254	-20%	●	▲	●	▼
Rowdy Nuisance Neighbours	▲	4.3	70	64	9%	●	▶	●	▼
Street Drinking / Begging / Drug Litter	▲	1.9	31	18	72%	●	▶	●	▼
Vehicle	▶	0.8	13	16	-19%	●	▶	●	▼
Other	▼	0.5	8	13	-38%	●	▶	●	▼

Anti-social behaviour has shown a reducing trend in Redruth during 2022.



Problem use of drugs and alcohol

Cornwall context

Drug related deaths are at an all-time peak and this has impacted on crime and health related harms. Socio economic factors such as high youth unemployment combined with cuts to social and other services under austerity have been cited nationally as contributing to this trend. There has been a rise in the numbers of people receiving treatment for drugs and alcohol in Cornwall.

Within Cornwall there was a **21% increase in alcohol related crime** during the 12 months up to October 2022 while the number of drug offences remained stable.

Alcohol related crime reduced by 5% (10 crimes) in the year ending October 2022 in Redruth. This is in contrast to the rest of Cornwall and other urban areas which saw an increase of 21%.

- There were 11 fewer drug offences in Redruth over these 12 months compared with the previous year.
- There were 31 crimes for possession of drugs in Redruth during this 12 month period.

Crime / Incident type	Trend	Rate per 1000	Year ending Oct 22	Year ending Oct 21	Annual Change	Urban areas	Trend	Cornwall Comparison	Trend
Possession of Drugs	▶	1.9	31	32	-3%	●	▶	●	▲
Dwelling burglary [1]	▶	2.1	16	16	0%	●	▶	●	▼
Shoplifting	▲	3.5	57	32	78%	●	▶	●	▲

There were no requests to clean up drugs paraphernalia in Redruth during 2022.

Dwelling burglaries stayed the same over this time period with 16 during the year ending October 2022. Shoplifting increased by 78% or 25 crimes over this year.

Young people and crime

Cornwall context

In Cornwall there has been an **escalation of concerns about young people** being involved in **anti-social behaviour and more serious issues**, including **violence, knife carrying and sexual offences**. As normal life has re-established after the pandemic, we have seen increases in public space violence linked to the night-time economy, alcohol related violence and violence amongst young people.

Services in Cornwall are reporting that, post pandemic, many young people are presenting with higher levels of complexity and show signs of a lower developmental age with less cognitive awareness. This is believed to be contributing to a worrying **increase in risk-taking behaviour** with an apparent lack of awareness of the consequences of harm (to themselves and others).

In the 12 months leading up to October 2022 the number of under 18s as a victim of crime in Cornwall rose by 24%.

The number of **under 18s as victims of crime increased by a third** (37 offences) over the year ending October 2022 in Redruth. This increase was higher than what was experienced in other urban areas and across the rest of Cornwall.

There were 32 young people in Redruth charged with committing 87 offences in the year ending October 2022.

Affected others

We know from analysis by the Office for Health Improvement and Disparities (OHID) that our young people in treatment are more likely to experience and witness domestic abuse in the home so it would be safe to suggest that those young people affected (known as affected others) by parental substance misuse would experience the same. This suggests that the environment is having a negative impact on these young people.

In Redruth there were 38 young people aged under 18 who are currently living with a parent who is engaged with substance use treatment services.

What residents think

As part of the update of our new Partnership Plan, we invited local people to “Have Your Say” about the **community safety issues that matter** on a day-to-day basis in the local area and what could be done to improve things.

Our **on-line survey** was available via Cornwall Council’s [Let’s Talk Cornwall](#) in July and August 2022. We also held some **face-to-face engagement events** in the summer.

- Across Cornwall 83% of people said they feel safe during the day in their local area; a significant improvement on last year’s 61%.
- In Camborne and Redruth **56% felt safe during the day** which was consistent with the Cornwall average.
- Of the 152 people who answered the survey, **28% felt unsafe after dark**. This percentage is below that of the Cornwall average (38%).
- **19% of those surveyed said they had seen or experienced discrimination/ hostility** in their local area in the last 12 months motivated by hostility towards an individual’s identity. Of those that responded yes to this question, **race** was the most frequently targeted characteristic.
- Respondents felt that a **greater, visible Police presence** would have the greatest impact on these issues as well as easier ways to report crime and ASB and being tougher on low level incidents to prevent them escalating.

Safer Camborne and Redruth delivery 2022/23

Safer Camborne and Redruth facilitates and supports a coordinated multi-agency approach to community safety issues to improve feelings of safety and public reassurance, reduce the risk of harm to the community and protect vulnerable groups. Safer Camborne and Redruth **involves community members** in the work of the partnership and encourages social inclusion and community participation through being part of the problem-solving process and having a sense of pride in Camborne and Redruth.

This group is now in its fifth year and has developed a **comprehensive work plan** based on the evidence presented in the previous Camborne and Redruth Town Profile and feedback from the Residents Survey. Safer Camborne and Redruth has identified the following community safety priorities for the Town:

- Anti-social behaviour
- Domestic Abuse and Sexual Violence
- Alcohol & Drug Related Harm and Recovery
- Provision for Young People
- Community Engagement & Building Resilience

Safer Camborne and Redruth continues to meet virtually every month to ensure that regular dynamic intelligence and updates about emerging community

safety, crime and antisocial behaviour across the towns are fed in and acted upon.

Anti-social behaviour

This year we have **continued to address pockets** of antisocial behaviour in the towns through a balance of support and enforcement measures; targeted work in both of the Town Centres and hotspots such as Camborne Churchyard and Redruth Train Station by the anti-social behaviour officer has meant that ASB levels in the towns have remained stable. **ASB pop-up events and drop-ins** were held in both towns. Regular surgeries at Redruth Library as well as appearances at both the Buttermarket in Redruth and Camborne Produce Market were held.

Multi-agency panels to coordinate work with individuals causing ASB in the Town were **hosted monthly by the dedicated ASB** officer which allowed agencies to coordinate support and where necessary, enforcement on individuals in the town.

Where pockets of ASB in the town were identified, the ASB officer and Community Safety Officer worked together alongside the Police to **produce problem solving plans involving the local community**. The officers would also engage with neighbouring residents, knocking on doors and dropping letters in to houses with contact details on in order to develop actionable intelligence.

- Public Spaces Protection Order signage was also refreshed in hotspot areas of both towns in order to inform the public of the alcohol zones.
- The ASB Officer also engaged with Camborne Pubwatch meetings to share information and support the Night-time economy stakeholders in tackling ASB.

Links were also built with the Gypsy and Traveller communities in the mining villages such as those living at Wheal Jewel Traveller site. Complex Needs Community Development Workers attended and engaged with Travellerspace, a CIC supporting Gypsy and Traveller families in order to plan future projects.

Domestic abuse and sexual violence

In November the Domestic Abuse Team delivered Bystander Intervention training at Camborne Rugby Club to staff from seven licensed premises in the town. The training gives staff the skills, techniques and confidence to challenge risky behaviour in relation to sexual violence in a safe way.

An awareness raising campaign designed by Falmouth University students was displayed on buses and bus stops in the area during the 16 days of Activism in November. The campaign highlights the importance of people to be 'active bystanders' and not let sexual violence go unreported or be ignored.

Beyond this the Healthy Relationships Training from Safer Futures (commissioned by Cornwall Council) was delivered in schools in Pool and Camborne.

Drug & alcohol related harm and recovery

Emergency temporary accommodation Bunkabins or 'Pods' were installed in Rosewarne Car Park in 2022. Since then, the site staff have been linked into the Safer Towns partnership in order to **regularly share information in order to support clients.**

The complex needs team has conducted visits to businesses in Redruth to support them with reporting, **following local concern about visibly vulnerable adults in the street.** Walkabouts were also conducted in Camborne in a similar manner, with a particular focus on rough sleeping in the town.

Provision for young people

Eight young people also took part in the 999 academy during the school holidays. Some positive work took place with some who **were susceptible to county lines drug exploitation.** Numerous referrals have come out of it for family social work and the young people engaged with YZUP on the issues surrounding drug use. One of them in particular who was very quiet, opened up about the situation in their home life to the surprise of the workers present and support was able to be provided.

Detached outreach work took place in Redruth in response to ASB reported at Kresen Kernow and the Town Centre. The school were involved in information sharing as well as getting out to **engage with young people in the community.** Action for Children also delivered outreach in Camborne as well as engaged with the local youth club sessions.

- A bid for Serious Violence Prevention Funding was submitted to the Police and Crime Commissioner to **secure additional peer on peer support** for young people in Redruth as well as additional Outreach.
- Football Sessions with Plymouth Argyle were also held with young people from the Gypsy and Traveller Community.

Community engagement and building resilience

Police Liaison Group meetings with all local Councillors in the wider Camborne, Pool, Illogan and Redruth area were held in order to keep Members updated of Police activity as well as give them an opportunity to raise issues on behalf of their residents.

Engagement and pop-up events were advertised on social media and shared in local community Facebook groups as well as by partner agencies.

Vulnerability index

The Vulnerability Index is a small area risk model, that looks at the cumulative impact of a range of community safety issues at town and small area (Lower Super Output Area) level. The model uses rates of incidence per 1000 resident population compared with the Cornwall average

Key Observations

Overall, the Community Network Area of **Camborne and Redruth scores higher than average on the Vulnerability Index**. This area is fairly deprived with approximately 30% of the population living in areas that rank in the 20% most deprived LSOAs in the country². There are 8 areas identified as being in the top 20% and a further 11 areas in the top 40% most deprived areas of the country. This indicates that there is likely to be a higher level of need especially with respect to Income, Employment, Health and Living Environment.³

Camborne

Town area	Population	Average	Violence with injury	Domestic Abuse	DASV	Drugs	Alcohol
Camborne Tuckingmill Valley and Roskear Parc	2291						
Camborne Rosemellin	2208						
Camborne North Parade and Rosewarne Gardens	1936						
Camborne Beacon and Brea	1782						
Camborne Pengegon	1321						
Camborne Trevu and Mount Pleasant	1687						
Troon North and Beacon	1219						
Camborne Weeth and Lower Rosewarne	1307						
Camborne College Street and the Glebe	1319						
Camborne Treswithian, Kehelland and Hells Mouth	1485						
Camborne Penponds and Barripper	1578						
Camborne Town Centre	1674						
Camborne Roskear and North Roskear Road	1667						
Camborne Dolcoath	1422						

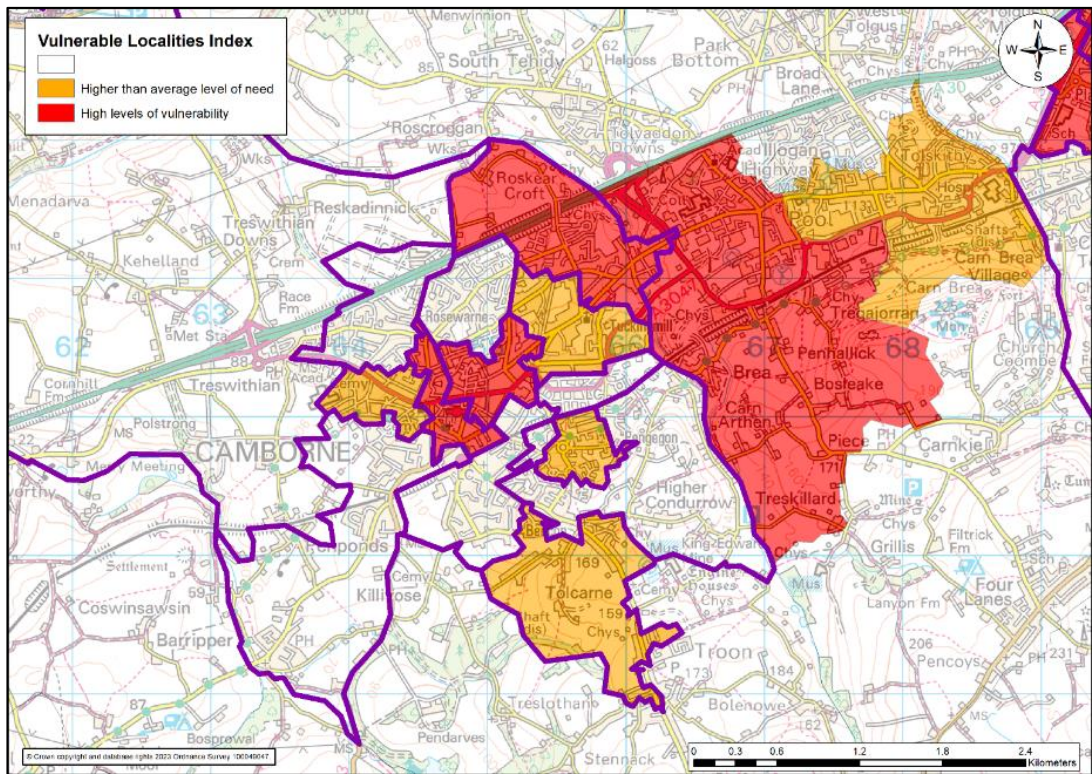
The areas with the greatest collective vulnerability across the selected indicators are:

- Tuckingmill Valley and Roskear Parc which has higher rates of residents in drug treatment;
- Camborne town centre has higher rates of residents in drug treatment and also has **higher rates of violence with injury offences**;
- North Parade and Rosewarne Gardens has higher rates of violence with injury and **residents engaged with alcohol and drugs services**;
- College Street and the Glebe has higher rates of domestic abuse and **residents in alcohol treatment**;
- Camborne Town Centre has higher rates of violence with injury, domestic abuse and residents engaged with drug treatment;
- 4 of the LSOA areas mentioned above, as well as Pengegon are also ranked within the 20% most deprived areas in the UK.

² Cornwall and Isles of Scilly Community Profiles <https://cornwall.communityinsight.org/>

³ Indices of Multiple Deprivation 2019 at LSOA level

Taking into account all of these indicators, the following map shows the areas within Camborne that have high levels of vulnerability (highlighted red) and higher than average levels of need (highlighted orange).



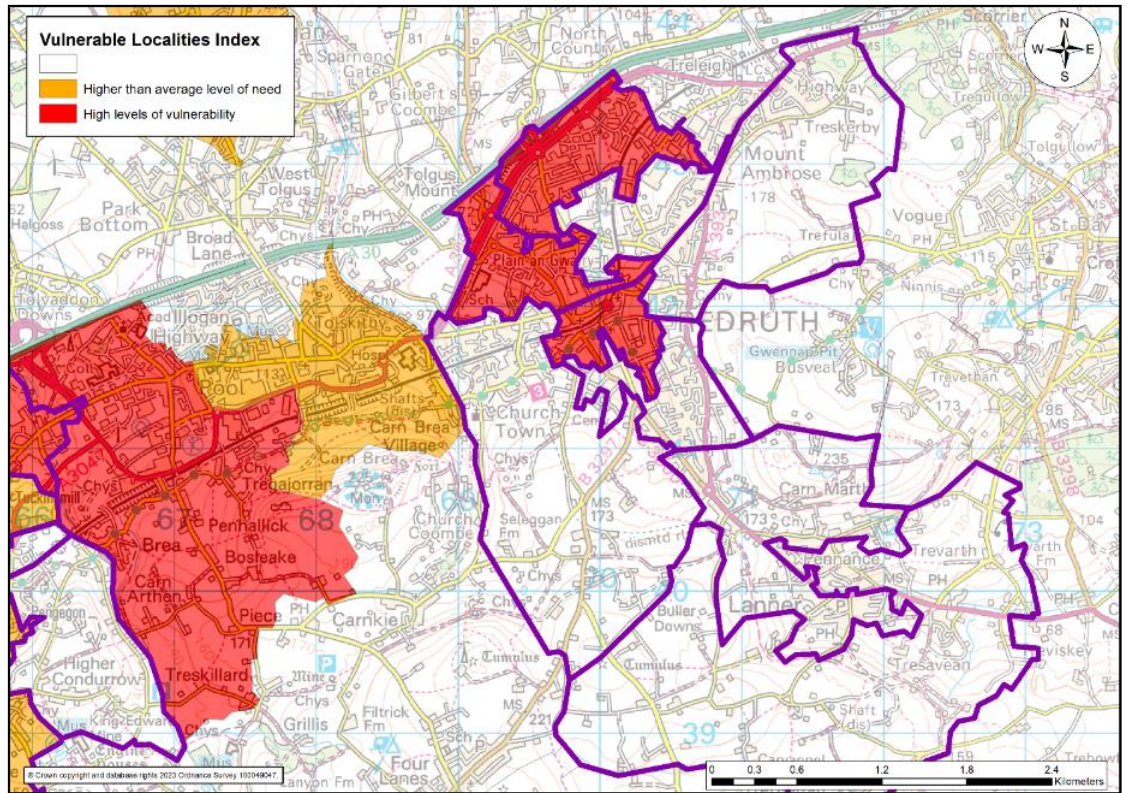
Redruth

The areas with the greatest collective vulnerability across the selected indicators are:

Town area	Population	Average	Violence with injury	Domestic Abuse	DASV	Drugs	Alcohol
Drump Road and Cardrew	1689						
Redruth North, Close Hill, Strawberry Fields and Treleigh	2077						
Redruth Tolgus Hill and Plain-an-Gwarry	1751						
Redruth Sandy Lane and Treskerby	1965						
Redruth Train Station and Victoria Park	1905						
Redruth Buller Hill and Churchtown	2181						
Redruth Albany Gardens and Clinton Road	2209						
Lanner East	1413						
Lanner West and South Downs	1435						

- Redruth North, Close Hill, Strawberry Fields and Treleigh has higher rates of domestic abuse and residents engaged with alcohol treatment;
- Tolgus Hill and Plain-an-Gwarry has higher rates of violence with injury, domestic abuse and **residents engaged with alcohol treatment**;
- Redruth Train Station and Victoria Park has higher rates of **residents engaged with alcohol and drug treatment services**;
- 2 of the areas mentioned above are also ranked within the 20% most deprived areas in the UK. These are Redruth North, Close Hill, Strawberry Fields and Plain Treleigh and Redruth Tolgus Hill and Plain-an-Gwarry.

Taking into account all of these indicators, the following map shows the areas within Redruth that have high levels of vulnerability (highlighted red) and higher than average levels of need (highlighted orange).



SAFER CORNWALL

Kernow Salwa