



**SAFER  
CORNWALL**

Kernow Salwa

# Safer Saltash Town Profile 2023



## Introduction

This profile provides a **picture of crime and community safety issues** for this area. It compares Saltash with the average for other large towns in Cornwall (towns with a population of 10,000 or more), described within this profile as “urban”. The profile also incorporates socio-economic, health<sup>1</sup> and community safety data that are available for this area.



In November 2022 Devon and Cornwall Police began transitioning to a new record management system (Niche), which will provide enhanced functionality and analytical capability. During the transition period, officers are able to view crime and intelligence records, but a range of process and data issues means that providing strategic information is not currently possible. Therefore, the latest reference data included in this profile relates to the 12 month period ending 31 October 2022.

## Key statistics

	<b>Current population of Saltash town area is 16,543</b>	<b>18% are aged 0-15</b> 17% Cornwall / 19% England
<b>People</b>		<b>25% are aged over 65</b> 25% Cornwall / 19% England
	<b>1 in 5 live in the 20% most deprived neighbourhoods in England</b>	
<b>Vulnerable groups</b>	<b>14% of children are living in poverty</b> (18% in Cornwall and 19% across England)	<b>Education &amp; skills</b>
		<b>16% of people have no qualifications</b>
		22% in Cornwall 18% across England
	<b>2% of households lack central heating</b>	
<b>Housing</b>	4% in Cornwall 2% across England	<b>Economy</b>
		<b>31% of people aged 16-74 are in full-time employment</b>
		27% in Cornwall 34% across England
	<b>21% of people have a limiting long-term illness</b>	
<b>Health &amp; wellbeing</b>	21% in Cornwall 17% across England	<b>Access &amp; transport</b>
		<b>16% of households do not have a car</b>
		15% in Cornwall 24% across England

Except where stated this profile provides information for **the geographical area representing Saltash Town as defined by Local Insight ([communityinsight.org](http://communityinsight.org))**; comparisons are drawn with the average for other large towns in Cornwall (with a population of 10k or more, also described as “urban”) and Cornwall as a whole.

<sup>1</sup> Network area [Community Profiles](#) and [Health Profiles](#) are available from the Joint Strategic Needs Assessment (Public Health) website pages

## Cost of living crisis and impact on crime and community safety

The pandemic left many households and businesses in Cornwall facing **financial difficulties**, as they struggled to manage increases in the costs of housing, energy, fuel and food. Three key factors – energy prices, rising inflation and tax increases – are now contributing to a **cost-of-living crisis**, with Russia's invasion of Ukraine adding further uncertainty to global oil and gas prices and supplies.

We know from previous recessions, that **financial precarity drives a range of harms** related to crime and community safety and the impacts can be long lasting. How we manage these risks and support the most vulnerable in our communities will feature in the refresh of our Partnership Plan for 2023/24.

**Violence** (stranger violence is unlikely to be impacted). Wider **safeguarding concerns** around financial abuse and manipulation, diet and wellbeing issues. People fall through the gaps in services that are overstretched and cutting back – increasing **demand for crisis support** in increasingly complex cases.

Anti-social behaviour may rise, with the increase in **rough sleeping** playing a small but visible part; **visible social disorder** drives wider feelings of unrest and **community tensions**; During a recession, people struggle with jobs and finances – scams and **frauds**, shoplifting, personal **thefts** and robberies increase, **black markets** and stealing to order escalates, and these markets are exploited by **organised crime**.

**Drug and alcohol use increases** to cope with increased psychological distress, bringing with it all the associated **harms to health and family life and the costs to society**, and leaving communities vulnerable to exploitation by organised crime and violence.

Based on previous recessions, interpersonal violence is likely to increase, specifically **domestic and acquaintance** potential increase in radicalisation, right-wing anti-immigrant narratives and **hate crimes**; increase in environment crime and nuisance occurrences.

An **insecure home** is the most significant barrier to any successful or lasting engagement with services that could provide help and support and a **key factor in perpetuating reoffending**.

Increase in **youth unemployment** rates has a long-term impact. Young people who leave school during recessions are significantly more likely to become involved in crime than those who leave school while labour markets are more buoyant. The sense of a lack of future and loss of opportunities drive **risk taking behaviour**, including drug use and involvement in crime.

## What is happening with crime in Cornwall?

Figures quoted within this profile refer to the period up until October 2022 which is the most recent available. Overall **recorded crime increased by 11%** with most types of crime having risen over the 12 months up until October 2022. This was expected further to the lifting of COVID restrictions and local trends are generally in line with the national picture.

**Cornwall's crime rate remains comparatively low**, and we are ranked 3/15 in our national comparison group (Most Similar Group, MSG). The rate of crime is 53.6 per 1000 population which is 22% lower than the MSG average.

Rates of theft continue to be significantly lower than in other similar places in the UK, despite the increases over the last year as crime levels have re-established.

There were **8,930 incidents of anti-social behaviour (ASB)** reported to the police in the 12 months to 31<sup>st</sup> October 2022, equating to a rate of 15.6 incidents per 1000 population. The volume of reported ASB incidents is **27% lower than the same period last year** and has returned to around the same level as it was pre-COVID.

Reports of ASB to the police **reduced across Cornwall over this 12 month period** with substantial falls in rowdy nuisance neighbour incidents (down by 45%) and rowdy inconsiderate behaviour (down by 21%).

**ASB continues to be a persistent headline issue in some of our larger towns.** This requires ongoing multi-agency efforts to manage – ensuring that the people involved, who often have multiple vulnerabilities, receive **the right support, alongside appropriate enforcement action** to provide respite to local businesses and other residents.

There were **700 hate crimes in Cornwall** in the 12 months up to October 2022 which is a **20% increase** on the previous 12 months. Of these crimes **racially motivated hate crime<sup>2</sup>** was the most commonly reported in Cornwall.

---

<sup>2</sup> It is important to note that hate crime can often target more than one characteristic, for example race and sexuality, within one reported crime.

## What are the key trends for the Saltash town area?

Along with other large towns in Cornwall, the Saltash town focus area can have higher levels of crime due to the concentration of people living there. It has a population of just under 16,700. The **all-crime rate in Saltash is lower than the average** for other large towns in Cornwall.

The crime rate in Saltash town has **remained fairly stable** in the 12 months up until October 2022. This opposes the increasing trend that we are seeing across Cornwall.



- There was an increase in **shoplifting** offences and other sexual offences reported, but the numbers are low in comparison to other similar towns.
- We also saw an **increase in alcohol related crimes** as well as a small increase in domestic abuse and **crimes where the victim is aged under 18**.
- The total number of **anti-social behaviour incidents reduced by 20%** which is similar to the reductions seen across Cornwall. The largest reductions can be seen in rowdy inconsiderate behaviour.
- There was an **increase in violence without injury** and a small increase in violence with injury. Both of these offence types have rates of crime that is below the average for the other urban areas.
- Although the numbers are low there has been a small increase in other Sexual offences when compared with the previous year.

## Crime overview

The table below provides a quick glance at all crime and disorder types in the Saltash town focus area, describing whether the trend is increasing (▲), decreasing (▼) or stable (▶) and how this area compares with the urban area average for Cornwall (high ●, above average ●, average or lower ●).

Crime / Incident type	Trend	Rate per 1000	Year ending Oct 22	Year ending Oct 21	Annual Change	Urban areas	Urban areas trend
All crime	▶	41.7	700	712	-2%	●	▲
Domestic Abuse (total incidents)	▲	16.7	281	262	7%	●	▲
Domestic Abuse Crimes	▲	10.1	169	157	8%	●	▲
Rape	▼	0.5	8	16	-50%	●	▶
Other Sexual Offences	▲	1.2	20	13	54%	●	▶
Stalking and Harrassment	▶	6.5	109	113	-4%	●	▲
Alcohol Related Crime	▲	7.9	132	98	35%	●	▲
Public Order Offences	▶	2.9	49	45	9%	●	▲
Anti-social behaviour incidents	▼	13.5	226	282	-20%	●	▲
Street Drinking/Begging/Drug Litter	▶	0.8	14	15	-7%	●	▶
Hate Crime	▶	1.0	16	17	-6%	●	▶
Homicide	▶	0.0	0	0	0%	●	▶
Violence with Injury	▲	5.9	99	93	6%	●	▲
Violence without Injury	▲	7.2	121	95	27%	●	▲
Under 18 Victims of Crime	▲	28.7	97	91	7%	●	▲
Drug Offences	▶	1.6	27	31	-13%	●	▶
Possession of Weapons	▶	0.5	8	8	0%	●	▶
Dwelling burglary [1]	▼	1.1	8	18	-56%	●	▶
Non-dwelling burglary	▶	0.5	9	11	-18%	●	▶
Robbery	▶	0.1	2	3	-33%	●	▶
Vehicle Offences	▼	1.9	32	37	-14%	●	▶
Shoplifting	▲	2.5	42	31	35%	●	▶
Other Theft	▶	2.9	49	51	-4%	●	▲
Criminal Damage	▼	6.0	101	122	-17%	●	▲
Arson	▶	0.1	1	3	-67%	●	▶
Other Offences	▼	0.9	15	22	-32%	●	▶

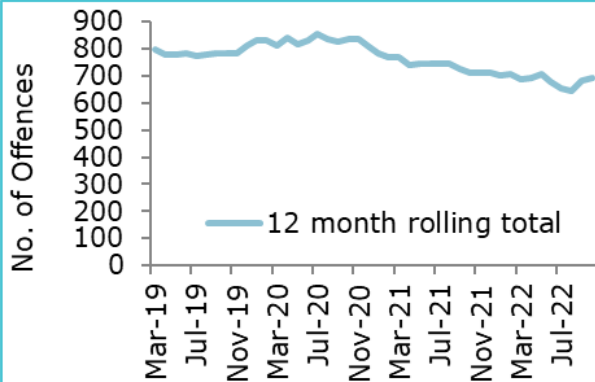
[1] based on rate per 1000 households

Note that caution should be taken when interpreting percentage change relating to small numbers (where there are less than 20 crimes per annum).



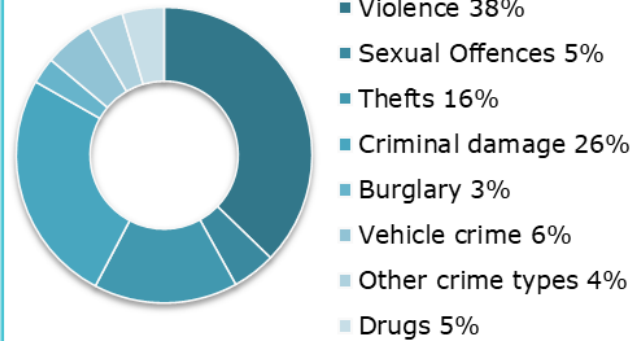
## Trends and seasonality

### Trend



The crime rate remained fairly stable in Saltash with a slight (-2%) reduction in the numbers of overall crime. This is in contrast to the trend for Cornwall which has shown an 11% increase.

### Offences

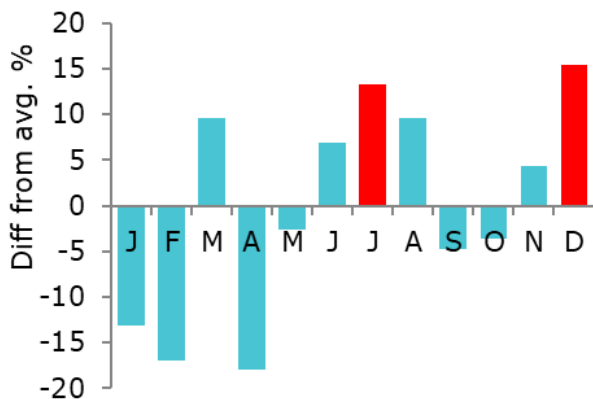


38% of the offences in Saltash were violence related (largely without injury). Saltash has a higher proportion of violent crimes than the Cornwall average.

Rate of crime shows impact on residents whereas volume of crime indicates demand.

### Seasonality

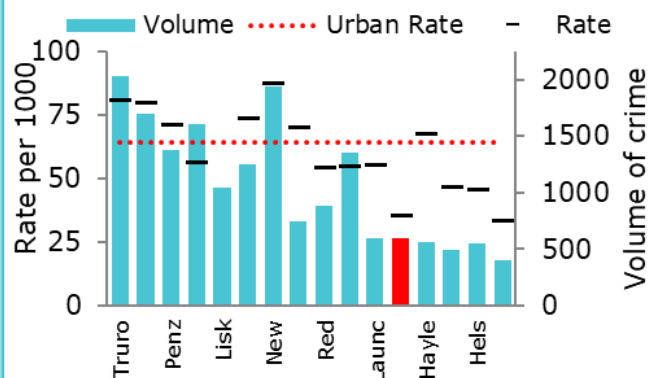
(based on a 3 year average)



There was no distinct seasonal trend in Saltash although the volume of crime was highest in December and July.

### Comparison

(based on combined rate and volume)



Saltash has a low crime rate and a lower volume of crime.

The rate of crime highlights impact on residents whereas volume highlights demand.

## Violence with injury

### Cornwall context

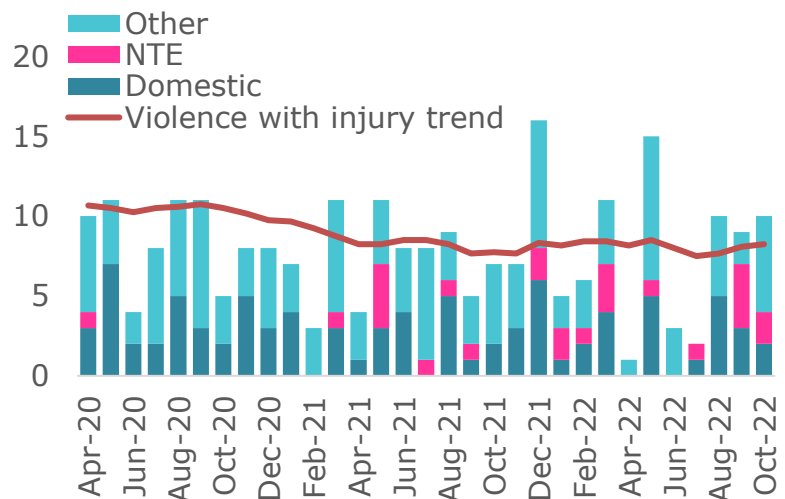
The level of violence with injury was around the same level as pre-pandemic - this was predicted and was in line with national trends. Nationally, the trend is now starting to level off and in Cornwall violence with injury has remained fairly stable for the year ending October 2022. Around a third of recorded violence with injury relates to domestic abuse.

Crimes relating to **violence with injury increased slightly** in Saltash (6%) which is higher than the overall trend for Cornwall (2%). There was a substantial **increase in alcohol related crime in Saltash** in the 12 months preceding October 2022 which increased higher than the rest of Cornwall. This is likely to be due to more people socialising after the pandemic and restrictions lifting.

- However, the **rate of violence with injury was lower in Saltash** than the urban and Cornwall average.
- Around **a third of violence with injury crimes in Saltash are domestic abuse** and 12% are linked to the night-time economy.
- There has been a small increase in violence with injury linked to the night-time economy.
- The number of young people (under 18) as victims of violence with injury has fallen in Saltash.

Violence with Injury in Saltash	Trend	Rate per 1000	Year ending Oct 22	Year ending Oct 21	Annual Change	Urban areas	Urban areas trend
Total Violence with Injury	▲	5.9	99	93	6%	●	▶
Alcohol related	▲	2.4	41	30	37%	●	▲
Victim aged under 18	▼	0.8	14	26	-46%	●	▶
Domestic Abuse	▶	1.9	32	31	3%	●	▲
Night time economy	▲	1.0	16	8	100%	●	▲
Other	▶	2.8	47	50	-6%	●	▲
Not known	▶	0.2	4	4	0%	●	▼

The chart shows the recent increase in violence with injury within Saltash. There has also been an increase in violence linked to the night-time economy following a decline during COVID and restrictions on licensed premises.





## Domestic abuse and sexual violence

### Cornwall context

Reported levels of domestic abuse and sexual violence have increased significantly over the longer term. In the year ending 2022 there was a small increase in the number of incidents and crimes recorded in Cornwall.

Domestic abuse makes up a high proportion of crimes recorded by Police in Devon and Cornwall at 22% of the overall figure for 21/22.

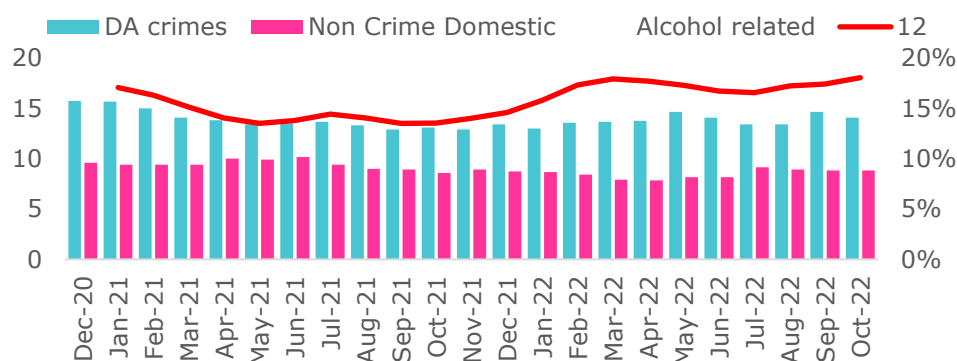
There was a **rise in the number of domestic abuse** incidents and crimes in Saltash in the 12 months ending in October 2022. This was in-line with the trend seen in other urban areas. However, the rate of domestic abuse in Saltash was still lower than in other urban areas.

Crime / Incident type	Trend	Rate per 1000	Year ending Oct 22	Year ending Oct 21	Annual Change	Urban areas	Trend
Domestic Abuse (total incidents)	▲	16.7	281	262	7%	●	▲
Domestic Abuse Crimes	▲	10.1	169	157	8%	●	▲
Rape	▼	0.5	8	16	-50%	●	▶
Other Sexual Offences	▲	1.2	20	13	54%	●	▶

There were fewer rapes reported (to Oct 22) but an **increase in the number of other sexual offences** in line with the overall picture for Cornwall.

The numbers of people accessing Safer Futures commissioned services for domestic abuse and sexual violence in Cornwall continues to rise. Within Saltash there were 144 people being supported for domestic abuse and sexual violence services in the 12 months up to October 2022. The numbers of people who received treatment in Saltash for domestic abuse and sexual violence services was **lower than the urban average**.

41 of the incidents of domestic abuse were flagged as linked to alcohol in the 12 months to October 2022 in Saltash. The chart below shows the rise of domestic abuse crimes and incidents in Saltash including those linked to alcohol.



## Anti-social behaviour

### Cornwall context

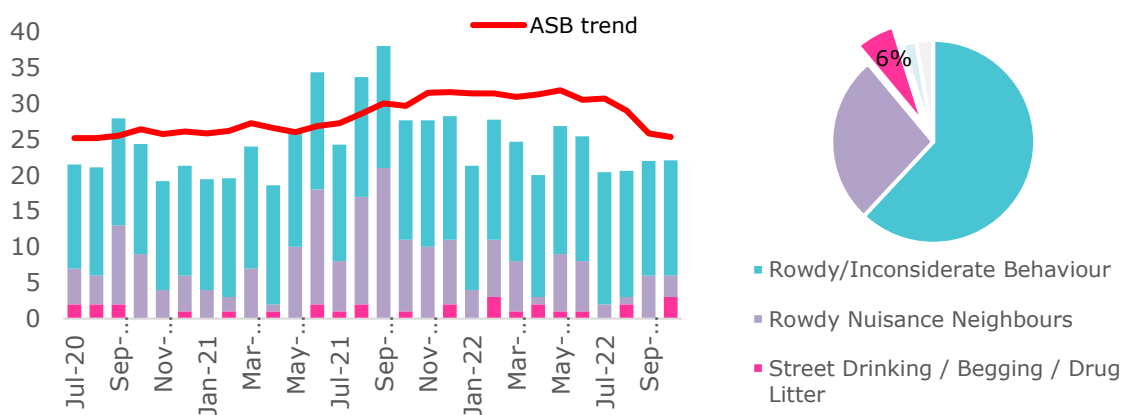
Reports of ASB to the police reduced across Cornwall in the year up to October 2022 with substantial falls in rowdy nuisance neighbour incidents (down by 45%) and rowdy inconsiderate behaviour (down by 21%). The volume of reported incidents at this point was 27% lower than the same period the previous year and had returned to its pre-COVID levels.

Reports of **anti-social behaviour fell by 20%** in the 12-month period up to October 2022 in Saltash which is consistent with the overall picture for Cornwall.

- The biggest decrease was in rowdy/inconsiderate behaviour with no change to rowdy nuisance neighbours and street drinking/begging/drug litter.

Crime / Incident type	Trend	Rate per 1000	Year ending Oct 22	Year ending Oct 21	Annual Change	Urban areas	Trend
Total ASB incidents	▼	13.5	226	282	-20%	●	▲
Rowdy/Inconsiderate Behaviour	▼	8.3	140	178	-21%	●	▲
Rowdy Nuisance Neighbours	▶	3.6	61	60	2%	●	▶
Street Drinking / Begging / Drug Litter	▶	0.8	14	15	-7%	●	▶
Vehicle	▼	0.3	5	10	-50%	●	▶
Other	▼	0.4	6	19	-68%	●	▶

The following chart shows the reduction in anti-social behaviour in Saltash following a spike in 2021. The vast majority of these incidents were linked to **rowdy/inconsiderate behaviour**, 27% due to rowdy/ nuisance neighbours and 6% linked to street drinking/begging/drug litter.



## Problem use of drugs and alcohol

### Cornwall context

Drug related deaths are at an all-time peak and this has impacted on crime and health related harms. Socio economic factors such as high youth unemployment combined with cuts to social and other services under austerity have been cited nationally as contributing to this trend. There has been a rise in the numbers of people receiving treatment for drugs and alcohol in Cornwall.

Within Cornwall there was a **21% increase in alcohol related crime** during the 12 months up to October 2022 while the number of drug offences remained stable.

The number of crimes for possession of drugs in Saltash stayed the same with 20 recorded for the 12 months leading up to October 2022.

Crime / Incident type	Trend	Rate per 1000	Year ending Oct 22	Year ending Oct 21	Annual Change	Urban areas	Trend
Possession of Drugs	▶	1.2	20	21	-5%	●	▶
Dwelling burglary [1]	▼	1.1	8	18	-56%	●	▶
Shoplifting	▲	2.5	42	31	35%	●	▶

There were 46 people<sup>3</sup> receiving drug treatment services in the 12 months leading up to October 2022. This is slightly below the average for urban areas but an increase on the previous year.

- 49 people were recorded as receiving treatment for alcohol in Saltash which is an increase on the previous year.
- There was a **substantial increase in alcohol related crime** (up 35%) in Saltash in the period up to October 2022 which is a higher increase than the Cornwall average.

Each year the Police receive requests to clean up drugs litter and paraphernalia from concerned members of the public. There were three requests in Saltash in 2021 and one in 2022 with Grenfell Road and Callington Avenue listed more than once as the location.

<sup>3</sup> Includes people of all ages who has received a comprehensive assessment for treatment for dependent or harmful use of substances (this could include alcohol as well as drugs).

## Young people and crime

### Cornwall context

In Cornwall there has been an escalation of concerns about young people being involved in anti-social behaviour and more serious issues, including violence, knife carrying and sexual offences. As normal life has re-established after the pandemic, we have seen increases in public space violence linked to the night time economy, alcohol related violence and violence amongst young people.

Services in Cornwall are reporting that, post pandemic, many young people are presenting with higher levels of complexity and show signs of a lower developmental age with less cognitive awareness. This is believed to be contributing to a worrying increase in risk-taking behaviour, with an apparent lack of awareness of the consequences of harm (to themselves and others).

In the 12 months leading up to October 2022 the number of under 18s as a victim of crime in Cornwall rose by 24%.

Although there was a small increase (up 6) in the number of young people as a victim of crime in Saltash the rate (Oct 2022) was still well **below the Cornwall and urban average**.

In Saltash 45 people aged under 18 were victims of violence in the 12 months leading up to October 2022 which is the same as the previous year.

When looking at young people who are suspected of committing an offence Saltash has 5 young people who have been charged with 9 offences over the last 12 months. All 9 of these offences were **classified as not serious** in that they had a gravity score of 4 or lower.

### Affected others

We know from analysis by the Office for Health Improvement and Disparities (OHID) that our young people in treatment are more likely to experience and witness domestic abuse in the home so it would be safe to suggest that those young people affected (known as affected others) by parental substance misuse would experience the same.

In Saltash there are **29 young people aged under 18** who are currently living with a parent who is engaged with substance use treatment services.

## Safer Saltash delivery 2022/23

Safer Saltash continues to meet virtually every four weeks to ensure that regular dynamic intelligence and updates about emerging community safety, crime and antisocial behaviour across the town is fed in and acted upon. This year we have:

- Continued to **address pockets of antisocial behaviour** in the town through a balance of support and enforcement measures;
- Targeted work at the Waterside to address specific concerns;
- Supported the Police with the 'Have your Say' public engagement event in January;
- Worked with civil enforcement partners to focus activity in hotspot locations;
- Advocated for the implementation of a live monitored CCTV system in Saltash;
- Worked in partnership with the 'Caradon Team Around the School' group to bring in improvements for young people and their families;
- Facilitated the **sharing of intelligence** with organisations responsible for road safety.

Looking to 2023/24, Safer Saltash has **planned an environmental visual audit** in several areas in the town. This audit will involve a number of partners from a raft of different agencies, coming together to assess the physical space and agree actions to improve the area in line with situational crime prevention strategies.

We will continue to work with the local youth provision organisations and the secondary school to support young people and address any concerns. We are planning a **celebration of diversity** and hope that the young people of Saltash will assist in co-producing the event/activity. We will be increasing face-to-face multi-agency engagement at public events such as the Town Council led event 'Shop Your Town' on 2nd March and Saltash Pride celebration on 3rd June.

## What residents think

As part of the update of our new Partnership Plan, we invited local people to "Have Your Say" about the **community safety issues that matter** on a day-to-day basis in the local area and what could be done to improve things.

Our **on-line survey** was available via Cornwall Council's [Let's Talk Cornwall](#) in July and August 2022. We also held some **face-to-face engagement events** in the summer.

- There were 14 responses to this survey which means that this does not provide a big enough sample for robust comparisons. All findings should be treated as indicative only.
- Across Cornwall **83%** of people said they **feel safe during the day** in their local area; a **significant improvement** on last year's 61%.
- There **were overall good feelings of safety from respondents in Saltash**. Of the 14 people who answered the survey, 9 felt very/fairly safe

after dark and 2 felt very/ fairly unsafe. During the daytime 13 out of 14 people felt fairly/very safe after dark.

- Of those surveyed, 8 felt that crime or anti-social behaviour had a minor impact in their area, with **6 people stating it had a moderate/significant impact.**
- 64% of respondents said they had seen or experienced crime or anti-social behaviour issues in their local area. A lot of these issues related to **parking, speeding or anti-social vehicle use** but also **drug use and dealing.**
- Respondents felt that a **greater police presence** and patrols would have the most impact on these issues.
- Three of the 14 respondents said they had witnessed discrimination in their local area and 5 people said they had seen someone under the influence of alcohol being **violent towards another person in a pub/nightclub** with **Fore Street** cited as a repeat location.

### Vulnerability Index

The Vulnerability Index is a **small area risk model**, that looks at the cumulative impact of a range of community safety issues at town and small area (Lower Super Output Area<sup>4</sup>) level. The model uses rates of incidence per 1000 resident population compared with the Cornwall average.

Overall as a town the **Saltash Area scores lower than average on the Vulnerability Index.** The town has no areas that rank in the 20% most deprived LSOAs in the country<sup>5</sup>. Some areas however, have a higher ranking in the domains of Employment and Living Environment

The areas with the greatest collective vulnerability across the selected indicators is:

- Saltash Warfelton- this area has **higher rates for residents** engaged with alcohol treatment services and above average rates of domestic abuse incidents;
- Saltash Town Centre and Saltmill also has above average levels of vulnerability with above average rates of domestic abuse incidents and more residents engaged with domestic abuse support services and alcohol treatment services;

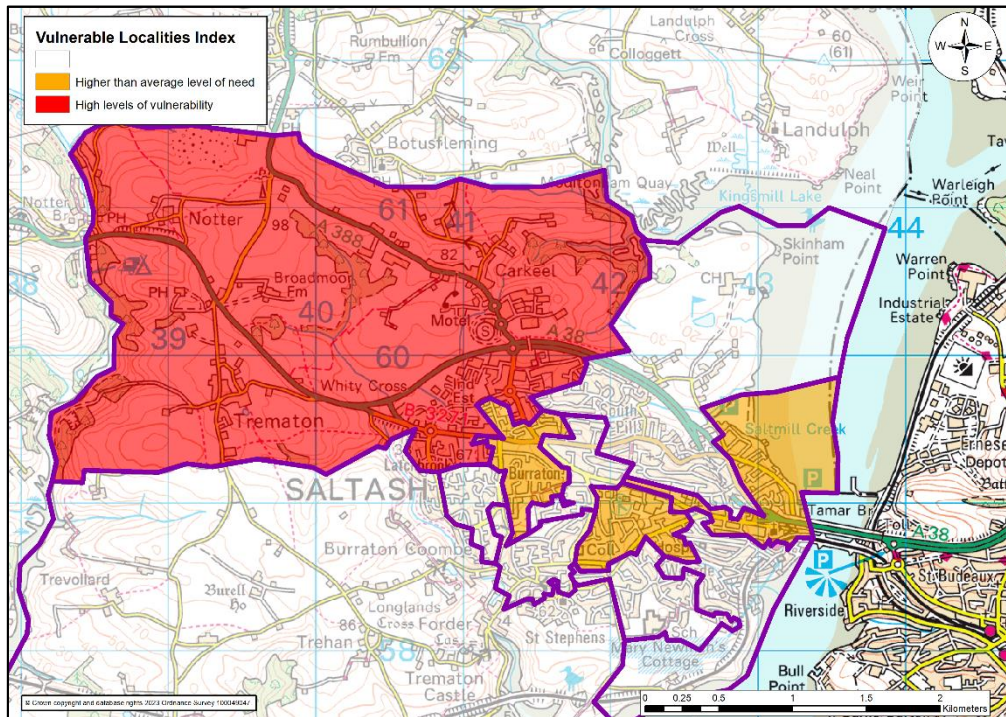
Town area	Population	Average	Violence with injury	Domestic Abuse	DASV	Drugs	Alcohol
Saltash Town Centre and Saltmill	1691						
Saltash Warfelton	1203						
Saltash Moorlands Lane and Oaklands Drive	1416						
Saltash Hospital and Wearde	1280						
Saltash Fairway and Bakers Hill	1416						
Saltash West Callington Road and Castlemead	1244						
Carkeel, Notter and Latchbrook North	1523						
Saltash South Pill	2720						
Saltash Beatrice Avenue, Broad Walk and Lynher Drive	1403						
Latchbrook South	1172						
Saltash Burraton	1218						

<sup>44</sup> Lower Layer Super Output Areas (LSOA) are a geographic hierarchy designed to improve the reporting of small area statistics in England and Wales. The average population for these areas is approximately 1500 people.

<sup>5</sup> Cornwall and Isles of Scilly Community Profiles <https://cornwall.communityinsight.org/>



Taking into account all of these indicators, the following map shows the areas within Saltash that have high levels of vulnerability (highlighted red) and higher than average levels of need (highlighted orange).



# SAFER CORNWALL

Kernow Salwa