



SAFER CORNWALL

Kernow Salwa

Safer Bodmin Town Profile



About the network area

The **Bodmin Community Network Area (CNA)** is made up of **seven parishes**; Blisland, Bodmin, Cardinham, Helland, Lanhydrock, Lanivet and Withiel.

This profile provides a **picture of crime and community safety issues** for this area. It incorporates information from other sources including Cornwall Council's Residents Survey and the wider socio-economic, health¹ and community safety profiles that are available for this area.



Key statistics



People

Current population is 20,500 and projected to **increase by 8%** to 21,907 by 2025

9% increase projected for Cornwall overall

29% are aged **under 25**
27% Cornwall / 30% England

22% are aged **over 65**
24% Cornwall / 18% England



Vulnerable groups

1 in 4 live in the **20% most deprived neighbourhoods** in England

22% of children are living in poverty

16% in Cornwall
17% across England



Education & skills

18% of people have **no qualifications**

22% in Cornwall
22% across England



Housing

6% of households **lack central heating**

7% in Cornwall
3% across England



Economy

35% of people aged 16-74 are **in full-time employment**

32% in Cornwall
39% across England



Health & wellbeing

22% of people have a **limiting long-term illness**

21% in Cornwall
18% across England



Access & transport

18% of households **do not have a car**

17% in Cornwall
26% across England

Except where stated this profile provides information for **the geographical area representing Bodmin and its immediate environs** as shown on the map on page 11; comparisons are drawn with the average for other large towns in Cornwall (with a population of 10k or more, also described as "urban") and Cornwall as a whole.

¹ Network area [Community Profiles](#) and [Health Profiles](#) are available from the Joint Strategic Needs Assessment (Public Health) website pages

Key messages

Compared with similar areas elsewhere in the UK, crime in Cornwall is **low** and it continues to be a **safe place** in which to live and work, although concerns about crime **remain high on the public agenda**. Recorded crime has seen some large rises over the last couple of years and this is predominantly due to **improved reporting and recording** of crime.

Crime in Cornwall is concentrated in our town centres and the level of recorded **crime in Bodmin town centre is comparatively high**.

Overall recorded **crime has remained stable** in Bodmin, contrary to the increase noted elsewhere in Cornwall.

Many types of crime have reduced and this includes alcohol-related crime, public order offences, criminal damage and burglaries. The number of **anti-social behaviour incidents reported has reduced by 23%**, and this includes a drop of 16% in street drinking/begging/drug litter.

Violent crime resulting in injury has gone up by a greater degree in Bodmin than in other areas. This is due to increases predominantly in offences of Actual Bodily Harm but also includes some serious offences.

This town has also experienced an **increasing trend in robbery offences**, and this trend is not seen in the other large towns. It should be noted that the number of crimes is low but **robbery is a high profile offence which can heighten residents' fear of crime**.

Prevalence of **drug use is higher than other areas**, based on the number of people accessing community treatment services for help with addiction, although crimes directly linked to possession and trafficking of drugs are low in the town.

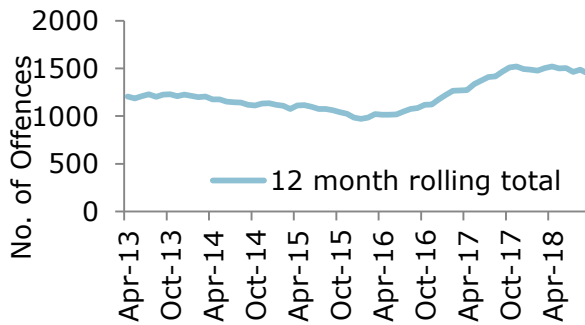
QUICK FACTS: BODMIN RECORDED CRIME

Time period reported refers to the 12 months to 30 September 2018 unless stated otherwise

Key Facts

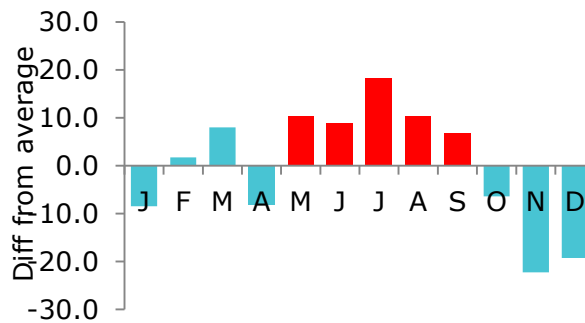
- 1,449 crimes / 92.4 crimes per 1,000 resident population;
- Rate of crime is above the average for other large towns in Cornwall (74.8);
- No increase seen in Bodmin, Cornwall increase of 13%;
- 599 Anti-Social Behaviour incidents recorded, of which 7% relate to Street Drinking/ Begging and Drug Litter. This is lower than the proportion seen in other large towns.

Trends



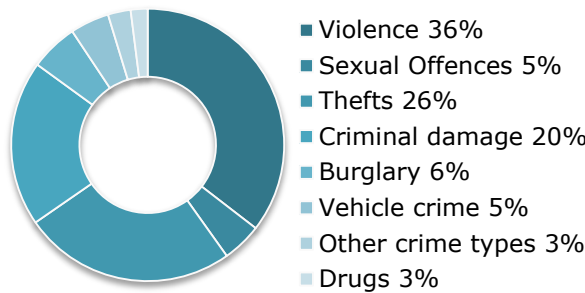
Stable crime rate in Bodmin, opposes the increase seen across the rest of Cornwall and the average for other large towns (13% and 11% respectively).

Seasonality



The crime rate in Bodmin sees a pronounced summer peak, which is also seen in Cornwall as a whole. There is a slightly higher than average number of crimes in February.

Crimes

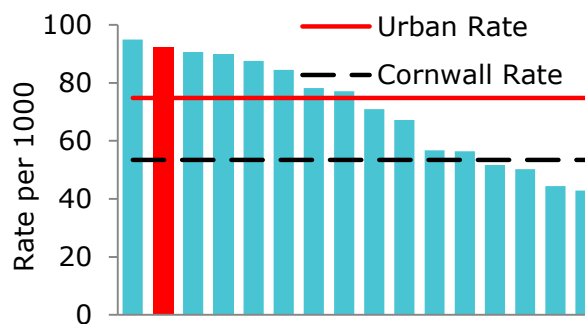


The chart shows the breakdown of all crime by type

Across all crime types:

- 18% domestic abuse
- 9% alcohol-related
- 10% U18 victims of crime
- <1% hate crime

Location



The rate of crime in Bodmin is above the average for other large towns in Cornwall.

The crime rate is 19% greater than the urban area average rate per 1000 population

Crime trends

The table below provides a quick glance at all crime and disorder types in the Bodmin town area, describing whether the trend is increasing (▲), decreasing (▼) or stable (▶) and how this area compares with the urban area average for Cornwall (high ●, above average ●, average or lower ●).

Crime / Incident type	Trend	Rate per 1000	Year ending Sep. 2018	Year ending Sep. 2017	Annual Change	All Towns	All Towns Trend
All crime	▶	92.4	1,449	1,466	-1%	●	▲
Domestic Abuse (total incidents)	▲	30.0	471	430	10%	●	▲
Domestic Abuse Crimes	▲	16.3	255	195	31%	●	▲
Rape	▶	1.9	30	30	0%	●	▲
Other Sexual Offences	▶	2.4	38	38	0%	●	▲
Alcohol Related Crime	▼	8.7	137	174	-21%	●	▲
Public Order Offences	▼	4.8	75	95	-21%	●	▲
Anti-social behaviour incidents	▼	38.2	599	782	-23%	●	▶
Street Drinking / Begging / Drug Litter	▼	2.7	42	50	-16%	●	▶
Hate Crime	▶	0.7	11	15	-27%	●	▲
Homicide	▶	0.0	0	0	0%	●	▶
Violence with Injury	▲	15.2	238	186	28%	●	▲
Violence without Injury	▲	17.6	276	258	7%	●	▲
Under 18 Victims of Crime	▼	39.2	139	153	-9%	●	▲
Drug Offences	▼	1.8	29	44	-34%	●	▶
Possession of Weapons	▼	1.0	16	21	-24%	●	▲
Dwelling burglary [1]	▶	4.0	26	29	-10%	●	▲
Non-dwelling burglary	▼	3.6	56	64	-13%	●	▶
Robbery	▲	0.8	13	6	117%	●	▶
Vehicle Offences	▲	4.3	67	54	24%	●	▲
Shoplifting	▶	12.0	188	197	-5%	●	▶
Other Theft	▲	10.5	164	149	10%	●	▶
Criminal Damage	▼	12.6	197	246	-20%	●	▶
Arson	▶	0.8	13	10	30%	●	▶
Other Offences	▼	1.5	23	39	-41%	●	▲
Road Traffic Collisions [2]	▶	0.3	5	6	-17%	●	▶

[1] based on rate per 1000 households

[2] figures are for 2017 calendar year

Note that caution should be taken in interpreting percentage change relating to small numbers (where there are less than 20 crimes per annum), due to the volatility of small numbers.

What is happening with crime in Cornwall?

Compared with other areas in the UK, crime in Cornwall is **low** and it continues to be a **safe place** in which to live and work, although concerns about crime **remain high on the public agenda**.

Devon and Cornwall Police along with other police forces, is **recording much higher levels of crimes** than in previous years. **Improvements in crime recording** are the principle driving factor, reflecting the police response to recommendations from national crime data integrity inspections.²

- Recorded crime **has increased significantly in Cornwall**, rising by 13% when compared with the previous 12 month period. The **increasing trend is now beginning to plateau**, meaning that the effects of improved crime recording practices would of taken effect;
- Recording improvements have focused on **violence and sexual offences**, and this is where we are seeing the **greatest impact on crime numbers**. More **public order incidents** are being crimed, rather than recorded as anti-social behaviour;
- The drive to raise awareness about more hidden crimes such as **sexual violence and abuse**, and improve victims' confidence in the support available, has resulted in more crimes being reported;
- The level of recorded **cyber-crimes has also increased** as we get better at identifying and reporting them;
- **Vehicle offences** have increased by 25% over the last two years, although the rate of crime **remains comparatively low**. Vehicle offences are generally well-reported by victims and well-recorded by the police, so this is likely to reflect a genuine increase in crime.

What are the key trends for the Bodmin town Area?

- Bodmin town centre is a hotspot for crime, along with other large towns in Cornwall. It has a population of just over 15,500. The **all crime rate in Bodmin is above average** when compared with other Cornish towns;
- Overall recorded crime in the Bodmin Town is **stable** when compared with the previous 12 months. This trend is **opposed to the increasing trend** seen in Cornwall and other large towns;
- Rates for **most crime and incident types are higher** than the rates seen across other large towns in Cornwall;
 - **Violence with injury has seen a significant increase** (28% or 52 offences) when compared with the previous year. This increase is being mainly driven by an increase in Actual Bodily Harm offences (42 offences), although there has been a small increase in more serious violence (8 offences). Violence with injury offences in Bodmin are **increasing at a greater rate** than the increase across Cornwall and the other large towns;
 - Offences of **violence without injury** has also seen an increase (7% or 18 offences), which has been driven by **increases in cyber related threats and harassment**;
 - There have been increases in the number of domestic abuse crimes during the 12 month period. The **increase of domestic abuse crimes and incidents seen in Bodmin is consistent** with the increases seen across Cornwall and the other large towns;
 - This area has experienced an **increasing trend in robbery offences**. This trend is not seen in the other large towns. **Numbers of robbery offences are low** (meaning that % changes will be volatile).

² In 2016 Devon and Cornwall were rated "inadequate" but had improved to "good" when re-inspected in 2018. [Devon and Cornwall Police: Crime Data Integrity re-inspection](#) 2018, HMICFRS 2018

Domestic Abuse and Sexual Violence

Crime / Incident type	Trend	Rate per 1000	Year ending Sep. 2018	Year ending Sep. 2017	Annual Change	All Towns	All Towns Trend
Domestic Abuse (total incidents)	▲	30.0	471	430	10%	●	▲
Domestic Abuse Crimes	▲	16.3	255	195	31%	●	▲
Rape	▶	1.9	30	30	0%	●	▲
Other Sexual Offences	▶	2.4	38	38	0%	●	▲

Note that increases in sexual offences and violent crime, including domestic abuse offences, should be seen in the context of **the police focus on improving the quality of crime recording**, combined with a universal drive to improve victim confidence and improve reporting rates.

- The area has a **higher rate of recorded domestic abuse** when compared with other large towns in Cornwall, The increasing trend seen in Bodmin is consistent with the increase seen across Cornwall and other large towns;
- Using prevalence estimates from the Crime Survey for England and Wales, we can estimate that **528 people in Bodmin were victims of domestic abuse in the last 12 months**, of which two thirds were female and a third male;
- The number of reported sexual offences in the town has remained stable, which opposes the increasing trend seen in the other large towns and Cornwall.
 - 30% (18 offences) of the 60 rape offences that have been recorded over the past 2 years in the area are flagged as related to domestic abuse.

ASB and Alcohol/Drug-related Harm

Crime / Incident type	Trend	Rate per 1000	Year ending Sep. 2018	Year ending Sep. 2017	Annual Change	All Towns	All Towns Trend
Total ASB incidents	▼	38.2	599	782	-23%	●	▶
Rowdy/Inconsiderate Behaviour	▼	25.2	395	546	-28%	●	▶
Rowdy Nuisance Neighbours	▶	6.8	106	106	0%	●	▼
Street Drinking / Begging / Drug Litter	▼	2.7	42	50	-16%	●	▶
Vehicle	▼	2.4	37	47	-21%	●	▼
Other	▼	1.2	19	33	-42%	●	▼

- There has been a **reduction in the number of Anti-Social Behaviour** incidents in the town. Although there is a reducing trend in the area the rate of incidents is still slightly higher than the average rate for other large towns;
- The largest reduction can be seen in Rowdy and Nuisance behaviour, which has reduced by 28% or 151 incidents. Although the **rates are still higher** than other towns the reduction seen in Bodmin **opposes the stable trend** seen throughout Cornwall;

- There has been a 16% reduction **in the number of Street Drinking/ Begging / Drug Litter incidents reported in the area** when compared with the previous year.
- 84% of all Anti-social behaviour incidents relate to Rowdy / Inconsiderate behaviour and Rowdy Nuisance Neighbours. Street Drinking makes up 7% of all reported anti-social behaviour incidents in the town, which is **lower than the average of other urban areas**.

Crime / Incident type	Trend	Rate per 1000	Year ending Sep. 2018	Year ending Sep. 2017	Annual Change	All Towns	All Towns Trend
Alcohol related Crime	▼	8.7	137	174	-21%	●	▲
Assault Related Hospital Presentations	▶	1.0	16	14	24%	●	▶
People in Alcohol Treatment		4.3	52			●	
People in Drug Treatment		9.5	115			●	

- The **rate of alcohol related crime** is significant lower than the other area average (10.2 crimes per 1000 population). The trend in Bodmin is also reducing which is opposed to the trend seen in other large towns and Cornwall;
- There have been over 160 people engaged with specialist treatment services for Drug and Alcohol dependencies over the last 2 years. The **rates of people in treatment are higher in Bodmin** when compared to that of other large towns.

Drug crime, Weapons and Thefts

Crime / Incident type	Trend	Rate per 1000	Year ending Sep. 2018	Year ending Sep. 2017	Annual Change	All Towns	All Towns Trend
Trafficking of Drugs	▶	0.4	6	6	0%	●	▶
Possession of Weapons	▼	1.0	16	21	-24%	●	▲

- The numbers of **drug trafficking offences in the area has remained stable**, with the rate of offences being lower than the rate for other large towns;
- Although there has been a small reduction in the number of possession of weapons offences in the Bodmin area we can see that the rate **is higher than the average** for other large towns;

Crime / Incident type	Trend	Rate per 1000	Year ending Sep. 2018	Year ending Sep. 2017	Annual Change	All Towns	All Towns Trend
Possession of Drugs	▼	1.5	23	38	-39%	●	▶
Dwelling burglary [1]	▶	4.0	26	29	-10%	●	▲
Shoplifting	▶	12.0	188	197	-5%	●	▶
Needle Find Incidents [2]			9	N/A	N/A		

[1] based on rate per 1000 households

[2] based on town and wider environs

- The number of offences for Possession of Drugs³ in the town area has seen a reduction. The rate of incidents is **below the average rate** for other urban areas;
- Although the rate of Shoplifting is higher than the average rate for other large towns, we can see that there has been a **slight reduction** when compared with the previous year;
- There have been 9 needle finds reported in the latest 12 months period in the town and its wider environs. A needle find can consist of a variety of drug paraphernalia that has been reported to Addaction and removed by the Cornwall Council Waste Team.

Safer Bodmin

Safer Bodmin will facilitate and support **a co-ordinated multi-agency approach** to community safety issues to improve feelings of safety and public reassurance, reduce the risk of harm to the community and protect vulnerable groups. Safer Bodmin will **involve community members** in the work of the partnership and will encourage social inclusion and community participation through being **part of the problem solving process** and having a sense of **pride in Bodmin**.

Based on the evidence presented in the Bodmin Town Profile and feedback from the Residents Survey, Safer Bodmin has identified the following community safety priorities for the Town:

1. Problem drug use and dangerous drug networks / County Lines / cuckooing⁴ and the associated violence;
2. Domestic Abuse;
3. Repeat offenders and the need to break this cycle by targeting the most prolific offenders;
4. Lack of provision for young people;
5. Alcohol-related violence and public disorder
6. Community engagement and building community resilience

So far the group has achieved and supported:

- Safer Bodmin have worked with Bodmin Town Council to see if the town needs additional **needle disposal units**. Although there is currently no requirement for additional units, drug litter in the area will continue to be monitored;
- The multi-agency group has received a **full briefing on current county lines** activity in the Town from the Police Intelligence Directorate. The group will prioritise raising public awareness of this complex crime and will focus on vulnerability and building resilience.

³ Increases in possession offences can be due to proactivity of police in regards campaigns and stop and search activity.

⁴ Cuckooing refers to the exploitation of young or vulnerable persons, to achieve the storage and / or supply of drugs, movement of cash proceeds and to secure the use of dwellings

- The **town fully supports the police campaign 'Zero Tolerance to Hate Crime'** campaign and the Town Council has agreed to facilitate a collection point for organisations that sign the pledge to pick up the support pack;
- Safer Bodmin now has its own page on the [Safer Cornwall website](#)⁵; This is regularly updated along with social media posts regarding emerging issues from the East Cornwall Community Safety Officer's [twitter profile](#)⁶;

What's coming up?

- A Police led shoplifting prevention training will be provided to local businesses in January 2019 in partnership with Bodmin Town Council;
- Planning for shoplifting prevention training for store owners and staff to be provided via Police Crime Prevention Unit. The date to be confirmed with Chamber of Commerce;
- National Domestic Abuse Awareness week runs from 25th November to the 2nd December.
 - Live question and Answer session with Independent Domestic Violence Advocates, looking at physical, emotional and financial abuse;
 - There is a Women Only Banner and Placard making Workshop at Bodmin Football Club in preparation for the Reclaim the Night March in Truro on the 1st of December.
- The **What Will Your Drink Cost campaign** is being reinvigorated for the Christmas Period, with resources being sent to licensed premises in the town;
- **Blue Light training for Safer Bodmin** in interventions with treatment resistant drinkers to support complex cases into treatment and support;
- Replacement Public Space Protection Order signage is being fitted at various locations across Bodmin, which provides Police and council with powers to **prohibit alcohol consumption in specific areas** of the town.

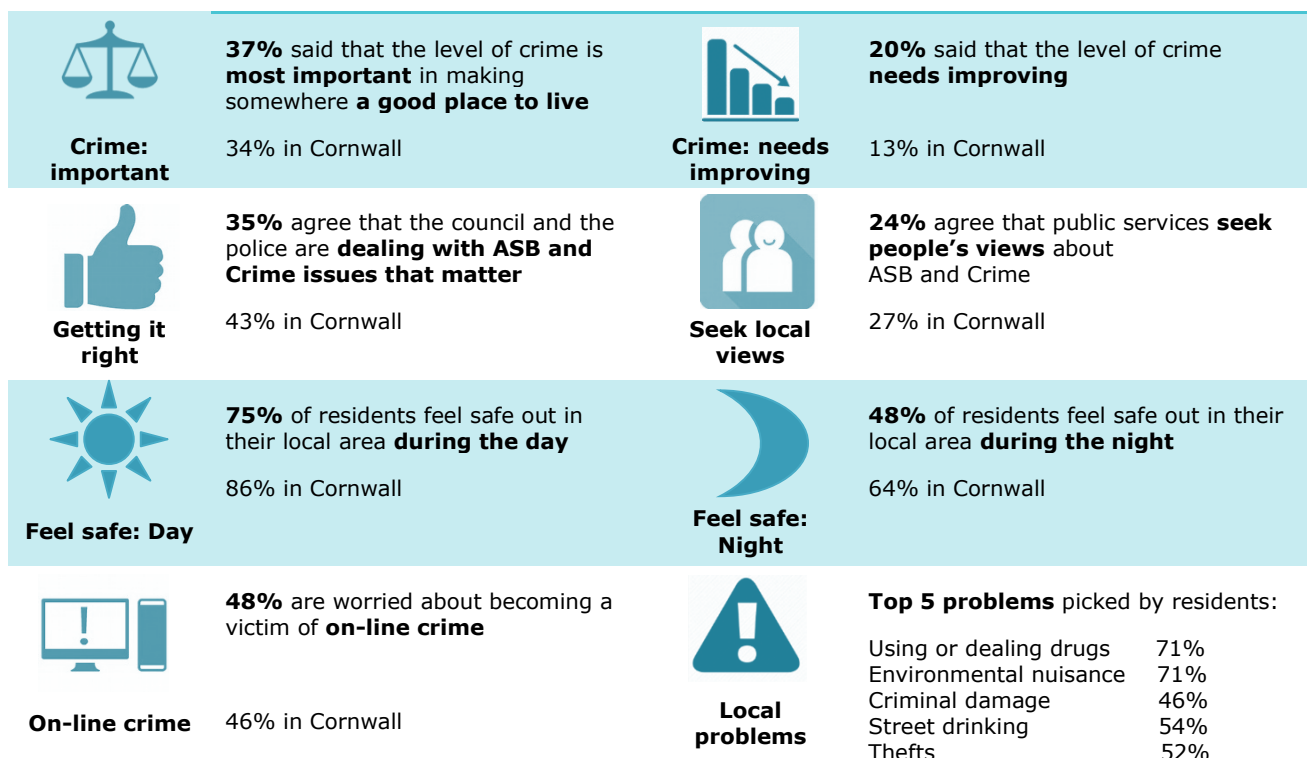
⁵ <https://safercornwall.co.uk/safer-towns/bodmin/>

⁶ https://twitter.com/LucyAllison_CS0.

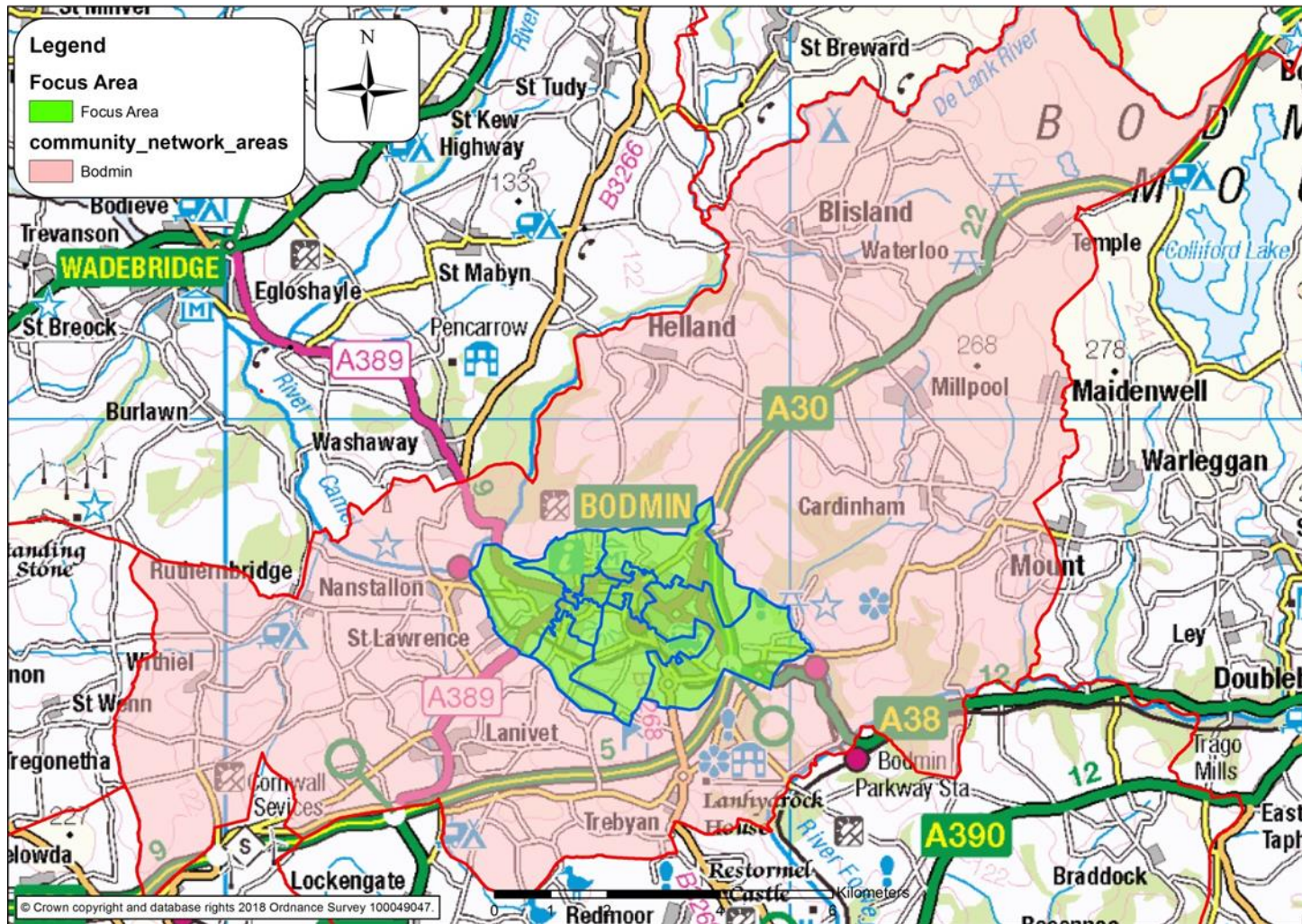
What residents say

In 2017, Cornwall Council commissioned a **large scale residents' survey** which is now planned to take place every 4 years. With 11,247 responses, this was the **largest survey** conducted by the Council **since the 2008 Place Survey**.

415 residents in the area responded to a range of questions about their satisfaction with Council services and the way things are run, alongside detailed questions about their community, perceptions of crime and safety and their own health and wellbeing. Results are presented at **network area level**, and provide a good indicator for the major urban area within this boundary.



Area Map⁷



7 The Bodmin focus area and Bodmin Network Area are not coterminous as the town area is made up of Lower Super Output Areas (LSOA), allowing for statistical comparisons, whereas the Network area is made up of Parishes