



**SAFER
CORNWALL**

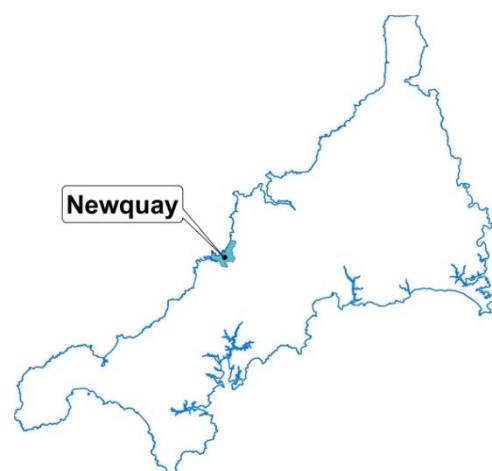
Kernow Salwa

Safer Newquay Town Profile



Overview

The **Newquay and St Columb Community Network Area** (CNA) is made up of **five parishes**; Colan, Mawgan-in-Pydar, Newquay, St Columb and St Wenn. It covers an area extending from west coast to St Wenn on the border with the Bodmin CNA. There is a **large influx of tourists** and seasonal workers throughout the year.



This profile provides a **picture of crime and community safety issues** for this area. It incorporates information from other sources including Cornwall Council's Residents' Survey and the wider socio-economic, health¹ and community safety profiles that are available for this area.

About the network area: key statistics



People

Current population is 28,165 and projected to **increase by 19%** to 33,463 by 2025,

9% increase projected for Cornwall overall

27% are aged **under 25**
27% Cornwall / 30% England

22% are aged **over 65**
24% Cornwall / 18% England



Vulnerable groups

1 in 10 live in the **20% most deprived neighbourhoods** in England

15% of children are living in poverty

16% in Cornwall
17% across England



Education & skills

25% of people have **no qualifications**

22% in Cornwall
22% across England



Housing

6% of households **lack central heating**

7% in Cornwall
3% across England



Economy

33% of people aged 16-74 are **in full-time employment**

32% in Cornwall
39% across England



Health & wellbeing

21% of people have a **limiting long-term illness**

21% in Cornwall
18% across England



Access & transport

22% of households **do not have a car**

17% in Cornwall
26% across England

Except where stated this profile provides information for **the geographical area representing Newquay and its immediate environs** as shown on the map on page 2; comparisons are drawn with the average for other large towns in Cornwall (with a population of 10k or more, also described as "urban") and Cornwall as a whole.

¹ Network area [Community Profiles](#) and [Health Profiles](#) are available from the Joint Strategic Needs Assessment (Public Health) website pages

Key messages

Compared with similar areas elsewhere in the UK, crime in Cornwall is **low** and it continues to be a **safe place** in which to live and work, although concerns about crime **remain high on the public agenda**. Recorded crime has seen some large rises over the last couple of years and this is predominantly due to **improved reporting and recording** of crime.

Crime in Cornwall is concentrated in our town centres and the level of recorded **crime in Newquay town centre is comparatively high**.

Overall recorded **crime has increased** in Newquay, which is consistent with the increasing trend across Cornwall.

There have been **increases in most crime types** with significant rises recorded in violence without injury, sexual offences, alcohol-related crime, public order offences and thefts from vehicles. All of these crime types have gone up across Cornwall.

Other types of crime that have increased in the town include **shoplifting, drug possession** and non-dwelling burglary.

The number of **anti-social behaviour incidents reported has increased slightly by 4%**, which has been driven by increases in nuisance neighbours (11%) and street drinking / begging / drug litter (13%).

Prevalence of **drug use is higher than other areas**, based on the number of people accessing community treatment services for help with drug problems. There has also been a **significant increase in drug possession offences**, which is an indicator of pro-active policing in the area. Crimes of drug trafficking have not increased, however the rate is higher than the overall rate for Cornwall.

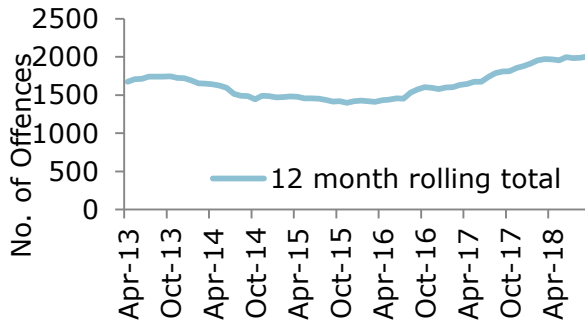
QUICK FACTS: NEWQUAY RECORDED CRIME

Time period reported refers to the 12 months to 30 September 2018 unless stated otherwise

Key Facts

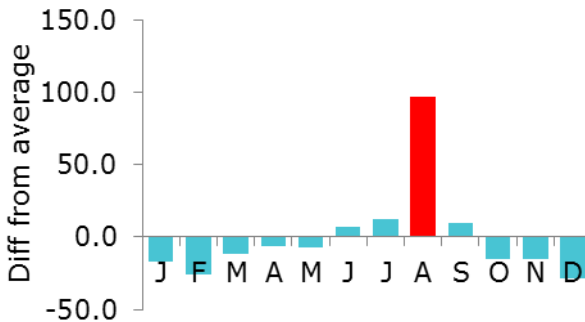
- 2,004 crimes / 94.9 crimes per 1,000 resident population;
- Rate of crime is above average of other large towns in Cornwall (74.8);
- Increased by 11% compared with Cornwall increase of 13%;
- 906 Anti-Social Behaviour incidents recorded, of which 13% relate to Street Drinking/ Begging and Drug Litter. Reported incidence of Street Drinking is higher than the urban area average in Cornwall.

Trends



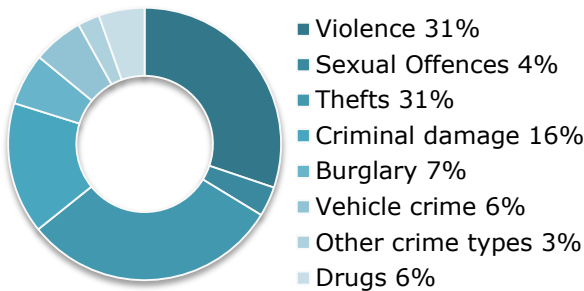
Recorded crime has increased by 11%, which is consistent with the increases seen across Cornwall and other towns (13% and 11% respectively).

Seasonality



The crime rate in Newquay sees a peak number of offences in August. The crime rate in August is 97% greater than the average number of crimes per month.

Crimes

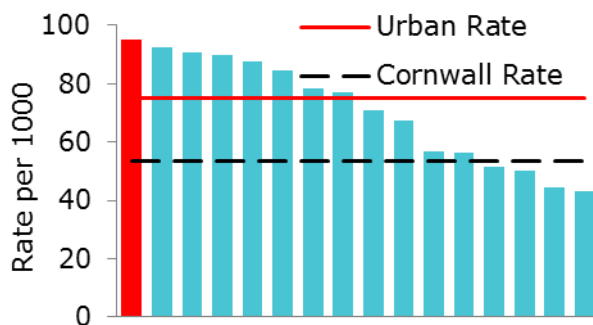


The chart shows the breakdown of all crime by type

Across all crime types:

- 13% domestic abuse
- 16% alcohol-related
- 8% U18 victims of crime
- <1% hate crime

Location



The rate of crime in Newquay is above the average for other large towns in Cornwall.

The crime rate is 21% greater than the urban area average rate per 1000 population

Crime trends

The table below provides a quick glance at all crime and disorder types in the Newquay town area, describing whether the trend is increasing (▲), decreasing (▼) or stable (▶) and how this area compares with the urban area average for Cornwall (high ●, above average ●, average or lower ●).

Crime / Incident type	Trend	Rate per 1000	Year ending Sep. 2018	Year ending Sep. 2017	Annual Change	All Towns	All Towns Trend
All crime	▲	94.9	2,004	1,810	11%	●	▲
Domestic Abuse (total incidents)	▲	21.9	462	391	18%	●	▲
Domestic Abuse Crimes	▲	12.1	255	171	49%	●	▲
Rape	▲	1.7	35	26	35%	●	▲
Other Sexual Offences	▶	1.7	36	32	13%	●	▲
Alcohol Related Crime	▲	15.4	326	299	9%	●	▲
Public Order Offences	▲	4.7	100	88	14%	●	▲
Anti-social behaviour incidents	▶	42.9	906	871	4%	●	▶
Street Drinking / Begging / Drug Litter	▲	5.5	117	104	13%	●	▶
Hate Crime	▲	0.8	16	9	78%	●	▲
Homicide	▶	0.0	0	0	0%	●	▶
Violence with Injury	▶	12.1	255	260	-2%	●	▲
Violence without Injury	▲	16.6	350	269	30%	●	▲
Under 18 Victims of Crime	▼	38.3	158	169	-7%	●	▲
Drug Offences	▲	5.2	109	86	27%	●	▶
Possession of Weapons	▶	0.9	20	16	25%	●	▲
Dwelling burglary [1]	▶	5.2	52	49	6%	●	▲
Non-dwelling burglary	▲	3.4	71	54	31%	●	▶
Robbery	▶	0.7	14	11	27%	●	▶
Vehicle Offences	▲	5.7	120	77	56%	●	▲
Shoplifting	▲	10.5	221	189	17%	●	▶
Other Theft	▶	17.8	376	384	-2%	●	▶
Criminal Damage	▼	9.7	205	234	-12%	●	▶
Arson	▶	0.4	8	12	-33%	●	▶
Other Offences	▲	1.5	32	23	39%	●	▲
Road Traffic Collisions [2]	▶	0.3	7	8	-13%	●	▶

[1] based on rate per 1000 households

[2] figures are for 2017 calendar year

Note that caution should be taken in interpreting percentage change relating to small numbers (where there are less than 20 crimes per annum), due to the volatility of small numbers.

What is happening with crime in Cornwall?

Compared with other areas in the UK, crime in Cornwall is **low** and it continues to be a **safe place** in which to live and work, although concerns about crime **remain high on the public agenda**.

Devon and Cornwall Police along with other police forces, is **recording much higher levels of crimes** than in previous years. **Improvements in crime recording** are the principle driving factor, reflecting the police response to recommendations from national crime data integrity inspections.²

- Recorded crime **has increased significantly in Cornwall**, rising by 13% when compared with the previous 12 month period. The **increasing trend is now beginning to plateau**, meaning that the effects of improved crime recording practices would of taken effect;
- Recording improvements have focused on **violence and sexual offences**, and this is where we are seeing the **greatest impact on crime numbers**. More **public order incidents** are being crimed, rather than recorded as anti-social behaviour;
- The drive to raise awareness about more hidden crimes such as **sexual violence and abuse**, and improve victims' confidence in the support available, has resulted in more crimes being reported;
- The level of recorded **cyber-crimes has also increased** as we get better at identifying and reporting them;
- **Vehicle offences** have increased by 25% over the last two years, although the rate of crime **remains comparatively low**. Vehicle offences are generally well-reported by victims and well-recorded by the police, so this is likely to reflect a genuine increase in crime.

What are the key trends for the Newquay town Area?

- Along with other large towns in Cornwall, Newquay town centre is a hotspot for crime. It has a population of just over 21,000. The **all crime rate in Newquay is above average** when compared with other urban areas in Cornwall;
- The volume of crime has increased by 11% (194 offences) when compared with the previous 12 months. This trend is **consistent with the increasing trend** seen in Cornwall and across the other large towns (13% and 11% respectively);
- There have been increases in most crime types in the Newquay town area. Rates for **most crime and incident types are higher** than the rates seen across other large towns in Cornwall;
 - The number of **shoplifting offences in the town has increased** by 17% (43 offences) when compared with the previous year. This opposes the stable trend seen across the other large towns;
 - **Violence without injury has seen a significant increase** (30% or 81 offences) when compared with the previous year. This increase is being mainly driven by **increases in cyber related threats and harassment**. There has also been a small increase in the number of common assault offences in the area;
 - The level of **violence with injury offences**, however, have **remained stable** compared with last year;
 - The numbers of domestic abuse crimes and incidents have increased and at a greater rate than the rise noted across Cornwall as a whole. The rise in non-crime incidents, in particular, may be an indicator of more victims being willing to report abuse to the police;

² In 2016 Devon and Cornwall were rated "inadequate" but had improved to "good" when re-inspected in 2018. [Devon and Cornwall Police: Crime Data Integrity re-inspection](#) 2018, HMICFRS 2018

- Offences of **drug possession have also increased**, although the number of drug trafficking offences have remained stable when compared with the previous year;
- **There were more hate crimes reported** in the town compared with the previous year, although the number of incidents remains low.

Domestic Abuse and Sexual Violence

Crime / Incident type	Trend	Rate per 1000	Year ending Sep. 2018	Year ending Sep. 2017	Annual Change	All Towns	All Towns Trend
Domestic Abuse (total incidents)	▲	21.9	462	391	18%	●	▲
Domestic Abuse Crimes	▲	12.1	255	171	49%	●	▲
Rape	▲	1.7	35	26	35%	●	▲
Other Sexual Offences	▶	1.7	35	32	13%	●	▲

Note that increases in sexual offences and violent crime, including domestic abuse offences, should be seen in the context of **the police focus on improving the quality of crime recording**, combined with a universal drive to improve victim confidence and improve reporting rates.

- The area has seen an **increase in recorded domestic abuse** incidents. The increasing trend seen in Newquay is greater than that seen across the rest of Cornwall. The increase is mainly accounted for by an increase in violence with and without injury, predominantly actual bodily harm and common assault;
- Using prevalence estimates from the Crime Survey for England and Wales, we can estimate that **723 people in Newquay were victims of domestic abuse in the last 12 months**, of which two thirds were female and a third male;
- The number of reported rape offences in the town has gone up by 35%. The rate of increase seen in Newquay is greater than that seen across Cornwall.
 - 36% (22 offences) of the 61 rape offences that have been recorded over the past 2 years in the area are flagged as related to domestic abuse.
 - The increase in rape offences has been driven by **increased reporting from victims aged under 18**. Although some of these offences are historical the majority of victims in this age group are aged between 15 and 18.

ASB and Alcohol / Drug related Harm

Crime / Incident type	Trend	Rate per 1000	Year ending Sep. 2018	Year ending Sep. 2017	Annual Change	All Towns	All Towns Trend
Public Order Offences	▲	4.7	100	88	14%	●	▲
Total ASB incidents	▶	42.9	906	871	4%	●	▶
Rowdy/Inconsiderate Behaviour	▶	29.0	612	592	3%	●	▶
Rowdy Nuisance Neighbours	▲	4.7	100	90	11%	●	▼
Street Drinking / Begging / Drug L	▲	5.5	117	104	13%	●	▶
Vehicle	▼	2.4	51	61	-16%	●	▼
Other	▶	1.2	26	24	8%	●	▼

- There has been an increase in the number of public order offences when compared with the previous year and this is likely to reflect more anti-social behaviour offences being recorded as crimes, in line with the general trend for Cornwall;
- There was a **slight increase in the number of anti-social behaviour** incidents in the town. This has been mostly driven by increased reports of rowdy nuisance neighbours and street drinking / begging / drug litter.
 - Reports of **street drinking/ begging / drug litter** have increased by 13% (13 incidents). The increasing trend is opposed to that seen across other large towns.
- 79% of all Anti-social behaviour incidents relate to Rowdy / Inconsiderate behaviour and rowdy nuisance neighbours. Street drinking makes up 13% of all reported anti-social behaviour incidents in the town, which is **consistent with the average of other urban areas**.

Crime / Incident type	Trend	Rate per 1000	Year ending Sep. 2018	Year ending Sep. 2017	Annual Change	All Towns	All Towns Trend
Alcohol related Crime	▲	15.4	326	299	9%	●	▲
Assault Related Hospital Presentati	▶	1.8	37	51	56%	●	▶
People in Alcohol Treatment		3.4	58			●	
People in Drug Treatment		8.4	142			●	

- The **rate of alcohol-related crime has increased**, and although the rate of crimes is still higher when compared with the other towns, the increase seen is lower than the overall increase across Cornwall;
 - The increase is accounted for by domestic abuse violent crimes with increases in common assault (violence without injury) and actual bodily harm (Violence with injury).
- 200 people in this area engaged with specialist treatment services for drug and alcohol dependencies over the last 2 years. The **rates of people in treatment in Newquay is consistent** with other large towns.

Drug crime, Weapons and Thefts

Crime / Incident type	Trend	Rate per 1000	Year ending Sep. 2018	Year ending Sep. 2017	Annual Change	All Towns	All Towns Trend
Trafficking of Drugs	▶	0.9	19	20	-5%	●	▶
Possession of Weapons	▶	0.9	20	16	25%	●	▲

- The numbers of **drug trafficking offences in the area has remained stable**, with the rate of offences being higher than the rate for other large towns. Offences of drug trafficking are an indicator of proactive policing in this area. Offences maybe linked to organised crime and possible County Lines activity.
- The number of offences related to possession of weapons has not risen when compared with the previous year.

Crime / Incident type	Trend	Rate per 1000	Year ending Sep. 2018	Year ending Sep. 2017	Annual Change	All Towns	All Towns Trend
Possession of Drugs	▲	4.3	90	66	36%	●	▶
Dwelling burglary [1]	▶	5.2	52	49	6%	●	▲
Shoplifting	▲	10.5	221	189	17%	●	▶
Needle Find Incidents [2]			23	N/A	N/A		

- There has been an **increase in the number of recorded offences for possession of drugs** in the town. The rising trend opposes the trend seen across the other larger towns;
 - Increases in possession offences can be due to proactivity of police in regards campaigns and stop and search activity.
- Shoplifting has increased by 17% or 32 offences when compared with the previous year. Rates of shoplifting are greater in Newquay than they are across the other large towns;
- There have been **23 needle finds** reported in the latest 12 months period in the town and its wider environs. A needle find can consist of a variety of drug paraphernalia that has been reported to Addaction and removed by the Cornwall Council Waste Team.

Safer Newquay

Safer Newquay **facilitates and supports** a coordinated multi-agency approach to community safety issues to improve feelings of safety and public reassurance, **reduce the risk of harm** to the community and **protect vulnerable groups**.

Safer Newquay has been established since 2002 however in the last year the remit of the group has been expanded to encompass all **Community Safety** issues within the town. Originally the partnership was focused on evening and

night time economy issues but due to changes with priorities for the town the partnership has adapted to address this. It works in partnership to address concerns outlined in the **Delivery Plan**, which is based on the evidence presented in the previous Newquay Town Profile, feedback from the Residents Survey and emerging concerns.

Safer Newquay has **identified the following community safety priorities** for the Town:

1. Dangerous Drug Networks
2. Shoplifting
3. Street Drinking
4. Homelessness
5. Water Safety
6. Night time and evening economy issues

So far the group has achieved and supported:

- **An Operational meeting** has been developed in response to increases in street drinking and other emerging concerns. It provides a forum to allow for dynamic information sharing which can support the partners with understanding the wider work taking place with individuals. It also provides an opportunity to discuss what further work the partnership could be doing to address the rising concern. These meetings are triggered by a request from Newquay Safe.
- **Shoplifting prevention briefing** has been provided to businesses and security guards within Newquay to provide practical information on how shops can deter and prevent thefts. Businesses are provided with shoplifting prevention information as well as information on evidence collection and how best they can support with this process.
- The multi-agency group have received a **full briefing on current county lines** activity in the Town from the Police Intelligence Directorate. The group will prioritise raising public awareness of this complex crime and will focus on vulnerability and building resilience. Outcome- partners informed on county lines and how they can support with intelligence gathering.



What's coming up?

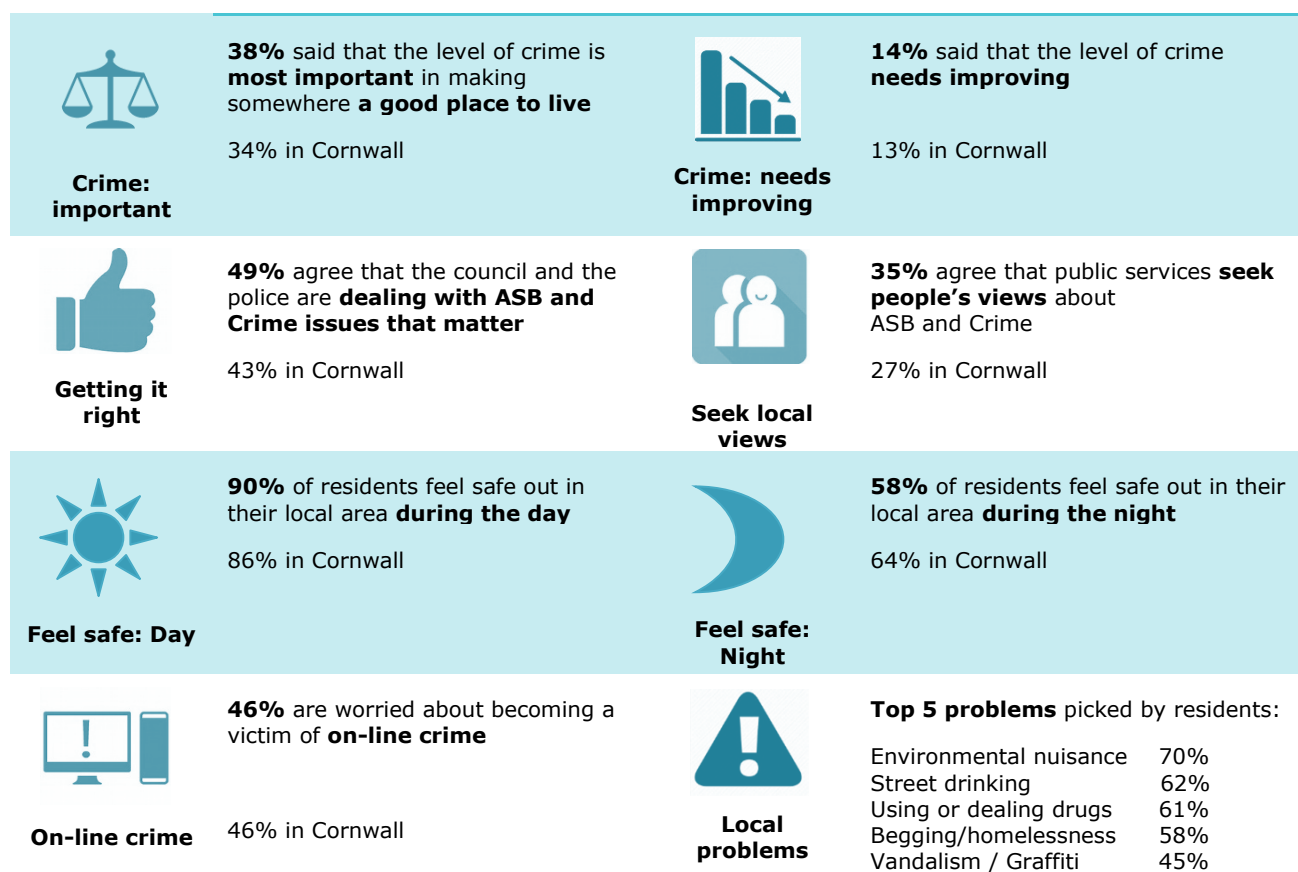
- **Shoplifting prevention** letter provided to main businesses of concern;
- Pilot local contact information to **increase intelligence regarding dangerous drug networks**;
- There will be a campaign looking at drug litter around toilet facilities and how best to raise awareness of safe disposal, therefore reducing the risk of potential injury;

- **Blue Light programme training** will take place in Newquay. The programme supports individuals who are **change resistant problematic drug and alcohol users**, not engaged with treatment and regularly presenting to emergency services;
- Replacement Public Space Protection Order (PSPO) signage is being fitted at various locations across Newquay.
 - PSPOs provide Police and council with powers with regards to **prohibiting alcohol consumption in specific areas** of the town.

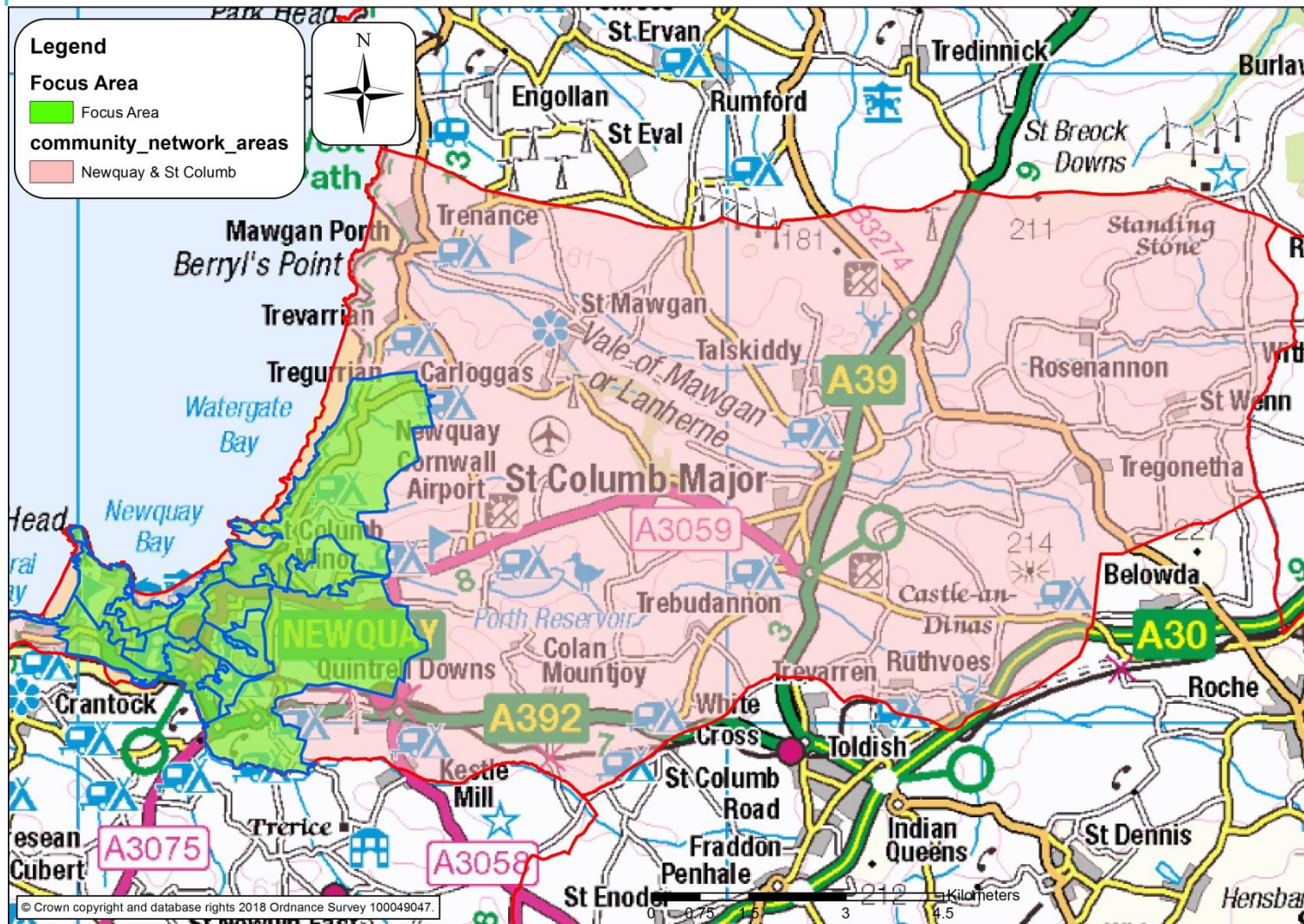
What residents say

In 2017, Cornwall Council commissioned a **large scale residents' survey** which is now planned to take place every 4 years. With 11,247 responses, this was the **largest survey** conducted by the Council **since the 2008 Place Survey**.

464 residents responded to a range of questions about their satisfaction with Council services and the way things are run, alongside detailed questions about their community, perceptions of crime and safety and their own health and wellbeing. Results are presented at **network area level**, and provide a good indicator for the major urban area within this boundary.



Area Map³



³ The Newquay focus area and Newquay and St Columb Network Area are not coterminous as the town area is made up of Lower Super Output Areas (LSOA), allowing for statistical comparisons, whereas the Network area is made up of Parishes