



SAFER CORNWALL

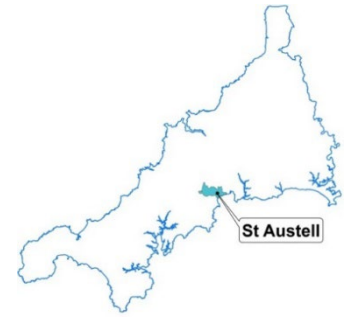
Kernow Salwa

Safer Liskeard Town Profile 2021



Introduction

This profile provides a **picture of crime and community safety issues** for this area. It compares Liskeard with the average for other large towns in Cornwall (towns with a population of 10,000 or more), described within this profile as "urban". The time period for this profile covers the COVID-19 Pandemic meaning that we are comparing a year in pandemic conditions against a year when we were largely pandemic free. The profile also incorporates socio-economic, health¹ and community safety profiles that are available for this area.



Safer Liskeard facilitates and supports a coordinated multi-agency approach to community safety issues to **improve feelings of safety and public reassurance**, reduce the risk of harm to the community and protect vulnerable groups. The group involves community members in the work of the partnership and encourages social inclusion and community participation by being part of the problem-solving process and having a sense of pride in Liskeard.

key statistics

	Current population of Liskeard town area is 10,236	29% are aged under 25 27% Cornwall / 30% England
People		22% are aged over 65 24% Cornwall / 18% England
	1 in 5 live in the 20% most deprived neighbourhoods in England	
Vulnerable groups	23% of children are living in poverty (16% in Cornwall and 19% across England)	Education & skills
		24% of people have no qualifications
		22% in Cornwall 22% across England
	5% of households lack central heating	
Housing	7% in Cornwall 3% across England	Economy
		35% of people aged 16-74 are in full-time employment
		32% in Cornwall 39% across England
	22% of people have a limiting long-term illness	
Health & wellbeing	21% in Cornwall 18% across England	Access & transport
		23% of households do not have a car
		17% in Cornwall 26% across England

Except where stated this profile provides information for **the geographical area representing Liskeard Town as defined by [Local Insight \(communityinsight.org\)](https://www.communityinsight.org)**; comparisons are drawn with the average for other large towns in Cornwall (with a population of 10k or more, also described as "urban") and Cornwall as a whole.

¹ Network area [Community Profiles](#) and [Health Profiles](#) are available from the Joint Strategic Needs Assessment (Public Health) website pages

What is happening with crime in Cornwall?

Cornwall's crime rate remains low and we have the third lowest crime rate in our most similar national family group, which is 21% lower than the average seen across the group. The **volume of crime continues to reduce**, falling by 6% or 1,666 offences compared with 2019/20.

Over the course of the pandemic, lockdowns and restrictions on daily life have **reduced the general level of crime and risk to the public** – as we move out of lockdown restrictions, crime levels will re-establish. Risk of harms inside the home, such as domestic abuse, have remained high and the complexity of needs for those seeking help has escalated, which has placed additional demands on services.

Anti-social behaviour remains at a higher level than in previous years. We are continuing to work successfully in partnership, through our Safer Towns Programme, to address the most persistent issues and support the communities affected and have increased local capacity to respond through jointly funded dedicated ASB caseworker posts (Truro and Penzance). We are continuing to work jointly with Housing to improve and increase availability of accommodation solutions.

What are the key trends for the Liskeard town area?

Along with other large towns in Cornwall, Liskeard town area can see greater volumes of crime. It has a population of just over 10,000. The **all crime rate in Liskeard is higher than the average** for other large towns in Cornwall. It should be noted that the population in Liskeard is much smaller than the other Safer Towns meaning that rates of crimes will be much higher in the town.

- The crime rate in Liskeard town has **remained relatively stable** over the last 12 months. This opposes the reducing trend seen in Cornwall and across the other large towns (6% and 7% respectively).

Safer Liskeard Priorities

- Drug related harm and recovery;
- Domestic Abuse;
- Taking pride in Liskeard and improved feelings of safety;
- Communications, community engagement and building community resilience;
- Hate crime

There have been increases in some crime types in the Liskeard town area, and rates for **most crime and incident types are higher** than the rates seen across other large towns in Cornwall:

- **Violence without injury has increased** by 12% in the town, which is consistent with the increase seen across other urban areas. A significant proportion of this increase can be accounted for by a rise in **domestic abuse-related** crimes;

- The rate **of domestic abuse crime is slightly higher** in Liskeard than the urban area average. The total number of incidents has increased by 19% overall when compared with the previous year. The increase is in both domestic abuse crimes and non-crime incidents, with the number that are alcohol related remaining relatively stable;
- There has been an **increase in the number of rape offences** in the town. Although the percentage increase is quite large, the volume of incidents is low, making up less than 2% of the total number of crimes in the town. Further analysis into these offences shows that there has been a **cluster of historical offences** (reported more than a year after the offence was committed) recorded in this period;
- Drug offences have also increased in the town but this is **related mainly to possession offences** rather than the more serious drug trafficking offence;
- Possession of weapons offences have also increased, although the volume of these offences are low, meaning that percentage changes will be more volatile;
- Criminal damage offences have increased by 21%, which **opposes the reducing trend** we have seen across the other urban areas. Rates of this offence type is also higher in Liskeard when compared with the average for the other urban areas. Further analysis into this shows that there was a cluster of offences in November 2020 where 58 vehicles were damaged in a short period of time;
- The number of anti-social behaviour incidents have increased by 35% over the last year. The increase is in both rowdy inconsiderate neighbours and rowdy nuisance behaviour, both of which have been **adversely affected by lockdown restrictions**;

Crime Overview

The table below provides a quick glance at all crime and disorder types in the Liskeard town focus area, describing whether the trend is increasing (▲), decreasing (▼) or stable (▶) and how this area compares with the urban area average for Cornwall (high ●, above average ●, average or lower ●).

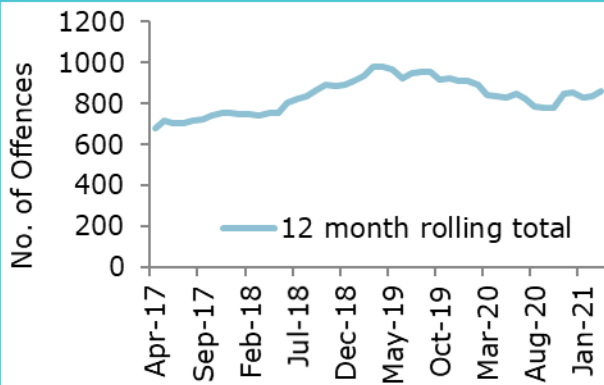
Crime / Incident type	Trend	Rate per 1000	Year ending Mar 21	Year ending Mar 20	Annual Change	Urban area comparison	Urban areas trend
All crime	▶	84.2	862	845	2%	●	▼
Domestic Abuse (total incidents)	▲	35.0	358	301	19%	●	▶
Domestic Abuse Crimes	▲	20.8	213	183	16%	●	▶
Rape	▲	1.4	14	4	250%	●	▶
Other Sexual Offences	▼	1.3	13	21	-38%	●	▼
Alcohol Related Crime	▶	18.3	187	181	3%	●	▼
Public Order Offences	▶	6.2	63	67	-6%	●	▼
Anti-social behaviour incidents	▲	41.0	420	312	35%	●	▲
Street Drinking/Begging/Drug Litter	▶	1.8	18	17	6%	●	▶
Hate Crime	▶	0.8	8	8	0%	●	▲
Homicide	▶	0.0	0	1	0%	●	▶
Violence with Injury	▼	13.7	140	160	-13%	●	▼
Violence without Injury	▲	25.2	258	230	12%	●	▲
Under 18 Victims of Crime	▼	37.2	82	94	-13%	●	▶
Drug Offences	▲	3.9	40	27	48%	●	▲
Possession of Weapons	▲	1.2	12	5	140%	●	▲
Dwelling burglary [1]	▲	4.7	21	16	31%	●	▼
Non-dwelling burglary	▶	1.3	13	12	8%	●	▼
Robbery	▶	0.4	4	5	-20%	●	▶
Vehicle Offences	▼	1.8	18	33	-45%	●	▼
Shoplifting	▼	2.6	27	47	-43%	●	▼
Other Theft	▶	5.5	56	57	-2%	●	▼
Criminal Damage	▲	16.1	165	136	21%	●	▼
Arson	▼	0.2	2	7	-71%	●	▼
Other Offences	▶	1.6	16	17	-6%	●	▲

[1] based on rate per 1000 households

Note that caution should be taken when interpreting percentage change relating to small numbers (where there are less than 20 crimes per annum), due to the volatility of small numbers.

Trends and seasonality

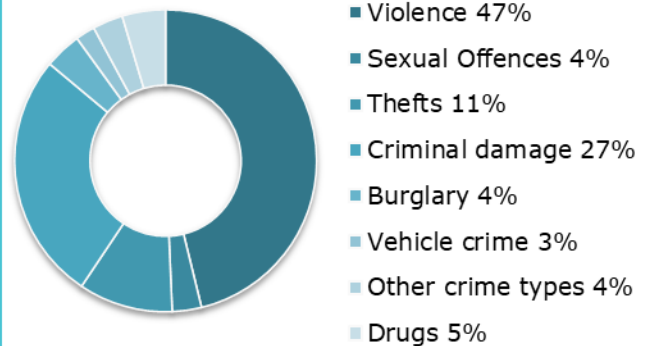
Trend



The crime rate in Liskeard is fluctuating and we have seen little change over the last 12 months in regards to the number of offences.

We did see a significant period of reduction until August 2020 but we have seen an increase since then.

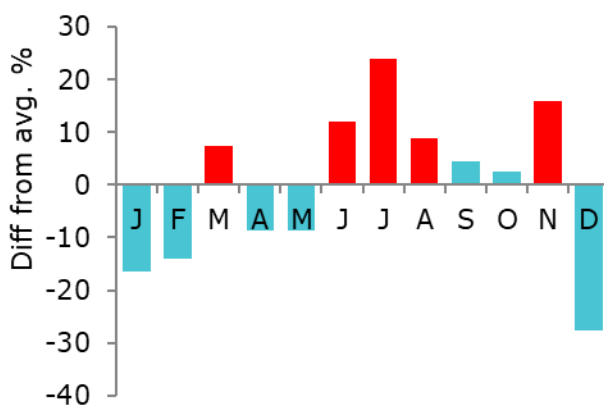
Offences



Just under half of all offences are categorised as violence. The proportion of violence is slightly greater than the average seen across the other urban areas – 37%. The proportion of criminal damage is also slightly higher in Liskeard.

Seasonality

(based on a 3 year average)

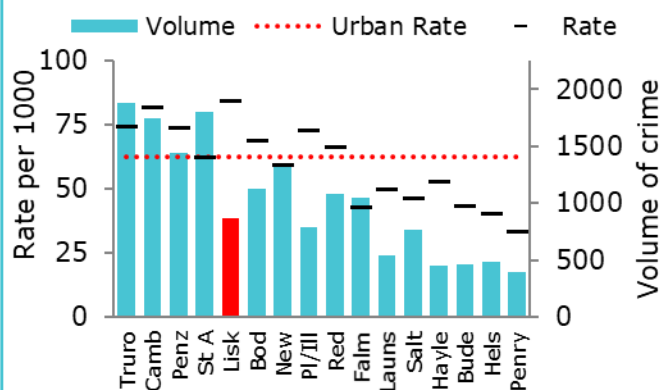


There is some seasonal variation for crime in Liskeard. There is a slightly higher than average number of crimes in summer months.

There is also slightly higher number of offences in November and March.

Comparison

(based on combined rate and volume)



Liskeard has the highest rate of crime when compared with the other large towns in Cornwall, although the volume of incidents is much lower.

Liskeard is ranked 5th for combined rate and volume of offences.

Rate of crime shows impact on residents whereas volume of crime indicates demand

Violence with Injury

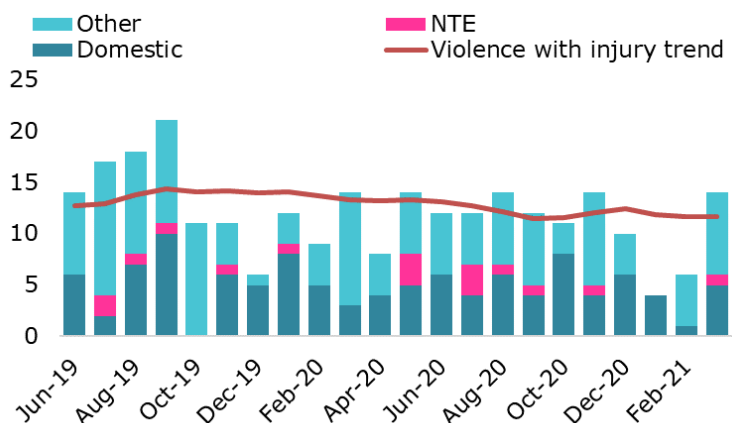
Cornwall context

Just under **half of all recorded crime relates to violence** against the person. Although Night Time Economy (NTE) violence has **fallen dramatically due to extended COVID restrictions**, other types of violence have increased including **domestic abuse**, and less serious violence such as malicious communications offences (which includes on-line harassment), harassment and low-level assaults. The level of **NTE violence will increase again once restrictions are lifted**, as we saw last summer.

When we look at violence with injury in Liskeard we can see that the rate of reduction is in-line with the reducing trend seen across Cornwall and the other urban areas (-13%). The largest reductions can be seen in alcohol related violence and other violence, whereas the number of domestic abuse offences have remained stable

Violence with Injury in Liskeard	Trend	Rate per 1000	Year ending Mar 21	Year ending Mar 20	Annual Change	Urban area comparison	Urban areas trend
Total Violence with Injury	▼	13.7	140	160	-13%	●	▼
Alcohol related	▼	4.8	49	67	-27%	●	▼
Victim aged under 18	▶	2.1	21	25	-16%	●	▼
Domestic Abuse	▶	5.6	57	61	-7%	●	▲
Night time economy	▶	1.0	10	10	0%	●	▼
Other	▼	6.3	64	85	-25%	●	▼
Not known	▲	0.9	9	4	125%	●	▼

- The chart to the right illustrates the trend of violence with injury. We can see how COVID-19 restrictions have affected the number of crimes between March and May 2020 during the first national lockdown. Domestic abuse and other violence have been affected less by restrictions, although there is still clearly a dip during the lockdown periods;
- It is unlikely that this reducing trend will continue, especially as we begin to lift restrictions and more people will begin to socialise and frequent night time economy premises.



Domestic Abuse and Sexual Violence

Cornwall context

Domestic abuse makes up a higher proportion of crime in Devon and Cornwall than similar areas elsewhere. 40% of violence with injury is domestic and this type of violence increased by 1% overall across Cornwall.

Sexual violence reported to the police has seen a steep rising trend over successive years, driven largely by increased reporting and improved recording. The trend has notably plateaued since 2019 and reported crimes reduced by 4% in the last year.

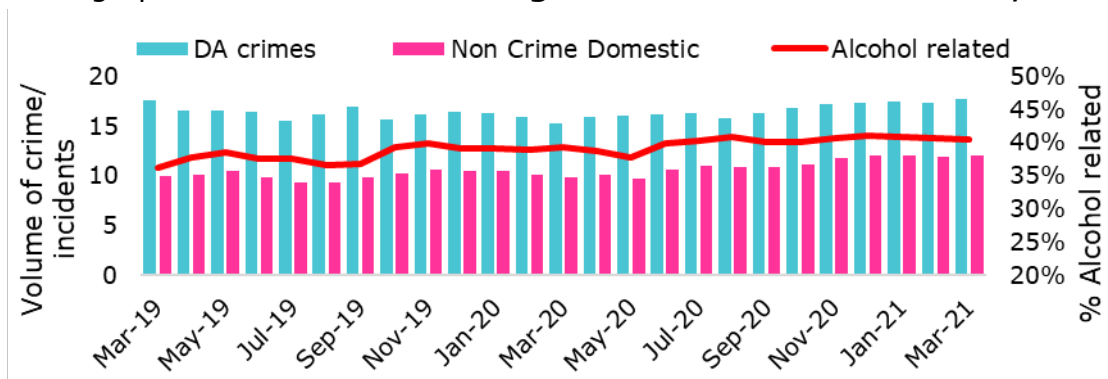
The rate **of domestic abuse crime is higher** in Liskeard than the urban area average.

- The total number of incidents have increased by 19% overall when compared with the previous year. This reflects an **increase in both domestic abuse crimes and non-crimes** over the latest 12 month period;
- The number of rape offences have increased over the last year, whilst the number of other sexual offences have reduced. Further analysis into the rape offences shows that there has been a cluster of historical offences reported in this period;

Crime / Incident type	Trend	Rate per 1000	Year ending Mar 21	Year ending Mar 20	Annual Change	Urban areas	Trend
Domestic Abuse (total incidents)	▲	35.0	358	301	19%	●	▶
Domestic Abuse Crimes	▲	20.8	213	183	16%	●	▶
Rape	▲	1.4	14	4	250%	●	▶
Other Sexual Offences	▼	1.3	13	21	-38%	●	▼

The chart below shows us how the trend of domestic abuse crimes and incidents varied over the course of the pandemic. We can see that the numbers **of crimes and incidents have increased** throughout the lockdown periods in Liskeard.

- The proportion that is alcohol-related crimes has stayed fairly consistent making up to **40% of crimes being recorded as alcohol-related**;



Anti-Social Behaviour

Cornwall context

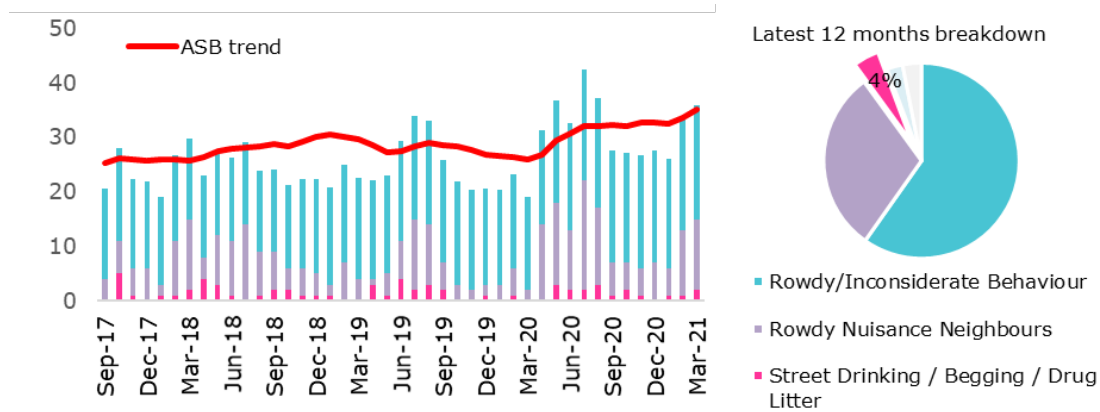
Over the last couple of years, although the volume of incidents has continued to fall, our towns have seen escalating issues with **complex anti-social behaviour, street drinking, drug use and rough sleeping**. The rise in **crack cocaine use** was an important driver initially but the **challenges of the pandemic have exacerbated pre-existing issues** over the last year, disproportionately affecting some of the most vulnerable people in our communities.

- **Since April 2020, across Cornwall we have seen a sharp rise** in anti-social behaviour reported to the police, alongside **increases in neighbourhood tensions and reduced tolerance**, believed to be further contributing factors.
- A significant proportion of police recorded ASB has been linked to COVID restrictions this year – but this only partially explains the rise. Overall **COVID-related incidents account for 10%** of reports, but this has been as high as 26% in January 2021. In the lockdown periods, we have seen on average an extra 12% of incidents per month that would not have previously been reported as anti-social behaviour.

In 2020/21, the number of anti-social behaviour (ASB) incidents reported to the police was **35% higher** than the previous year. After a substantial period of stability, we have seen the number of incidents begin to increase. The number of incidents reported **rose rapidly during the first national lockdown**, although it should be noted that trends were rising prior to the COVID pandemic.

Crime / Incident type	Trend	Rate per 1000	Year ending Mar 21	Year ending Mar 20	Annual Change	Urban areas	Trend
Total ASB incidents	▲	41.0	420	312	35%	●	▲
Rowdy/Inconsiderate Behaviour	▲	24.5	251	204	23%	●	▲
Rowdy Nuisance Neighbours	▲	12.4	127	58	119%	●	▲
Street Drinking / Begging / Drug Litter	▶	1.8	18	17	6%	●	▶
Vehicle	▶	1.1	11	15	-27%	●	▼
Other	▼	1.3	13	18	-28%	●	▲

- The **main increase can be seen in rowdy nuisance neighbours**, where rates are higher than other urban area average. Contributory factors include people spending more time at home, which has increased awareness of and exposure to behaviours perceived as anti-social, alongside an actual rise in incidents, and reduced tolerance;
- Rowdy inconsiderate behaviour has also increased, which is likely to be **linked to breaches of lockdown restrictions**. Rates of this type of incident are in line with the average across the other large towns



Street Drinking/Begging/Drug Litter incidents make up 4% of all reported incidents in the town which is much lower than the average of other urban areas (9%). These incidents have shown little change over the last 12 months.

Problem use of drugs and alcohol

Cornwall context

Across Cornwall Drug trafficking offences, particularly relating to 'other class A' drugs, have almost doubled when compared with last year and **weapons possession** offences are also up on last year by 17%, noting that trends in these types of offence tend to **reflect proactive targeting and policing priorities**. These are low volume crime types and make up only 1% of all recorded crime in each case.

In Liskeard we have seen substantial percentage increases in drug trafficking and possession of weapons offences (noting that the volume of crime is comparatively small), although only the latter have rates that are higher than the average seen across the other urban areas. Numbers of these offences are small therefore percentage increase should be treated with caution as they are volatile.

Crime / Incident type	Trend	Rate per 1000	Year ending Mar 21	Year ending Mar 20	Annual Change	Urban areas	Trend
Trafficking of Drugs	▶	0.7	7	3	133%	●	▲
Possession of Weapons	▲	1.2	12	5	140%	●	▲

Young People and crime

Cornwall context

Across Cornwall we have seen 278 young offenders during the year who were responsible for 501 offences, both of which have reduced by 19% and 20% respectively. **Young people in Cornwall tend to be charged with less serious violence**, usually offences of common assault or assault with injury (ABH) making up 79% of all violence offences in the past year. 8% (14 offences) related to serious violence and a further 10% (18 offences) for possession of a weapon.

Young people are also more likely to be charged with criminal damage and low-level theft offences.

- There has been a 13% reduction in the number of offences where young people aged under 18 are victims of crime. The **rate of incidents is significantly lower** than that across the other urban areas;
- There are very few young people in the town who are known to the youth offending service. These young people were charged with 5 offences during the latest 12-month period.

Vulnerability Index

The Vulnerability Index is a **new small area risk model**, currently in the development phase, that looks at the cumulative impact of a range of community safety issues at town and small area (Lower Super Output Area²) level. The model uses rates of incidence per 1000 resident population compared with the Cornwall average.

LSOA Name	Population	Average	Violence with injury by month	Domestic Abuse by month	Residents in Drug treatment	Residents in Alcohol treatment	Shoplifting (rate)	Deprivation (Imd 2019)
Liskeard St Cleer Road and Bodgara Way	1,531							
Liskeard Charter Way and Lake Lane	2,064							
Liskeard North and Callington Road	2,317							
Liskeard Town Centre West, Dean Street, Lanchard	1,264							
Liskeard Town Centre East, Sungirt, Plymouth Road	1,309							
Liskeard Lamellion and Old Road	1,751							

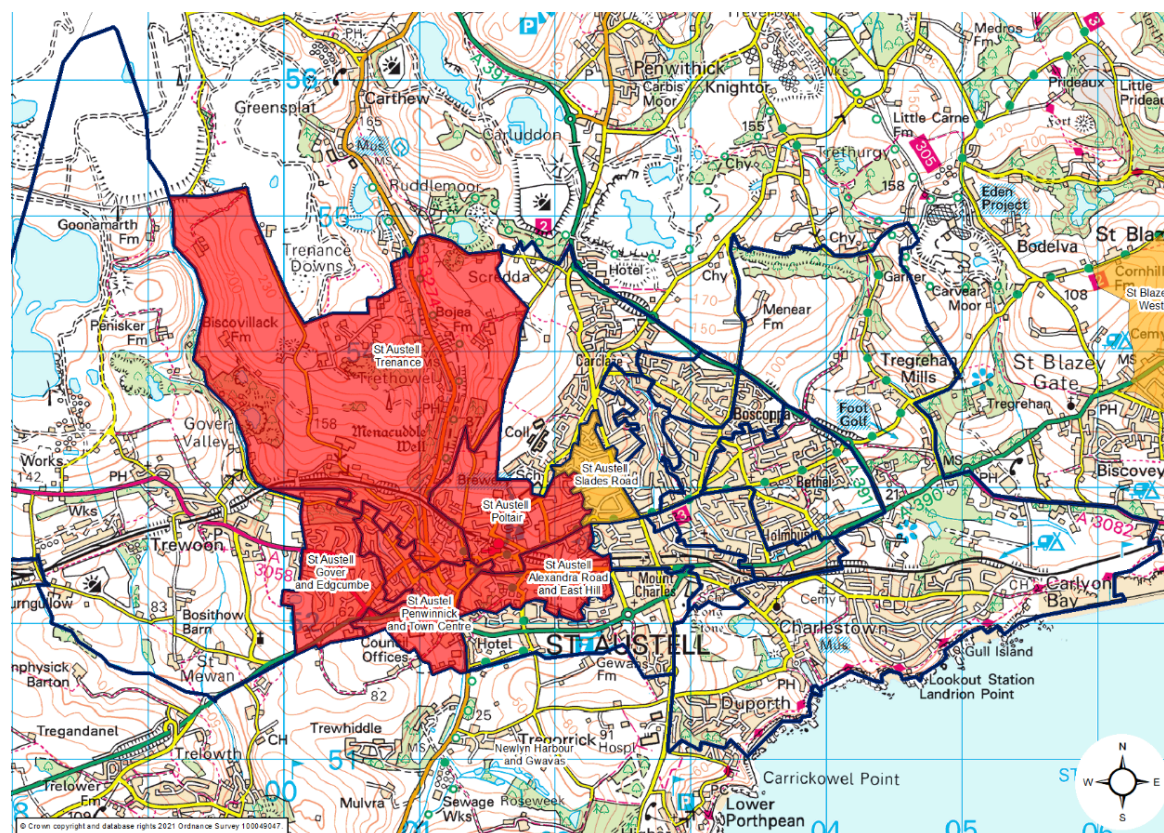
Please note that the numbers in this table are comparative against a score of 100 (Cornwall average) where scores that are in the top 20% are highlighted red and those that are in the top 40% highlighted amber.

² Lower Layer Super Output Areas (LSOA) are a geographic hierarchy designed to improve the reporting of small area statistics in England and Wales. The average population for these areas is approximately 1500 people.

Key Observations

Overall as a town the **Liskeard Area scores higher than average on the Vulnerability Index**. The town is fairly deprived with approximately 25% of the population living in areas that rank in the 20% most deprived LSOAs in the country³. This indicates that there is likely to be a higher level of need, especially in domains of employment, Income, and health and Living Environment⁴

- The areas with the greatest collective vulnerability across the selected indicators are:
 - Liskeard Town Centre West, Dean Street, Lanchard
 - Liskeard Town Centre East, Sungirt, Plymouth Road
 - Liskeard St Cleer Road and Bodgara Way
- The 3 LSOA areas mentioned rank within the top 20% of most deprived areas in the UK and all of the have higher rates of violence with injury, domestic abuse and residents engaged with alcohol and drug treatment services



³ Cornwall and Isles of Scilly Community Profiles <https://cornwall.communityinsight.org/>

⁴ Indices of Multiple Deprivation 2019 at LSOA level

What we are doing

In light of the changes brought about by Covid 19 restrictions, Safer Liskeard have adapted and met virtually every 3 - 4 weeks since March 2020 to ensure that regular dynamic intelligence and updates about the rapidly changing nature of crime and risk across the town is communicated and acted upon. The new model has been praised by members of the partnership who are still fully engaged and appreciate the speed of actions and the frequency of the communications.

Local issues have been predominantly related to the impact of COVID restrictions and more recently antisocial behaviour in specific areas of Liskeard. Partners have worked closely together to address these issues and multi-agency patrols of certain areas took place. During the early part of 2020, the focus was very much on supporting vulnerable families during lock down and supporting access to services and provisions; partnership activity took place with Volunteer Cornwall.

- During the Summer months Young People Cornwall began providing outreach to young people in Liskeard and sharing key information between agencies. Joint outreach with We Are With You was conducted in target areas throughout the year to **engage with vulnerable individuals and the public**. We supported social distancing prevention measures in the town and encouraged the use of local businesses.

Safer Liskeard have strongly supported Liskeard Town Council and the live monitored CCTV system in the town that is proving vital to public safety and supporting criminal investigations. More recently, the partnership has encouraged the trial of two further cameras in Liskeard, these are both Rapid Deployable Cameras that are a temporary resource for specific areas of need.

No community tensions in relation to second homeowners emerged in Liskeard but there were reports from nearby Looe during this period; we worked collectively to promote positive news stories and key messages to counteract negative messages. There has also been significant promotion of Domestic Abuse and Sexual Violence services, We Are With You, and how to access support during lockdown. This has been alongside raising awareness of scams and financial exploitation with vulnerable groups. Outside of the town, issues emerged with wild camping, fires and waste on Bodmin Moor; we worked with the rural crime partnership and Bodmin Moor Landowners Association to address this.

Safer Liskeard has its own page on the Safer Cornwall website; this is regularly updated along with Safer Cornwall social media posts regarding emerging issues. We want to thank all the partners who have been involved with Safer Liskeard and continue to support the work of the partnership.

SAFER CORNWALL

Kernow Salwa